

## .156" (3.96mm) Center Wafer Assembly

### 2400 Series

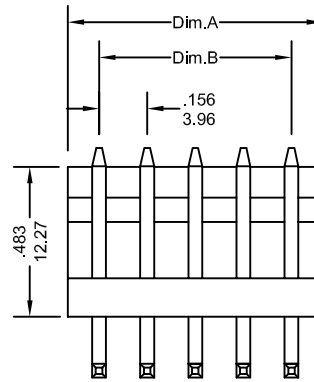
#### FEATURES:

- . 2-25 Circuits
- . .045"[1.14mm] Square wire pins or round pin
- . Nylon, [UL 94V-2] or [UL 94-0]
- . Straight or Right angle pins
- . Mate with Center Crimp connector [2410]

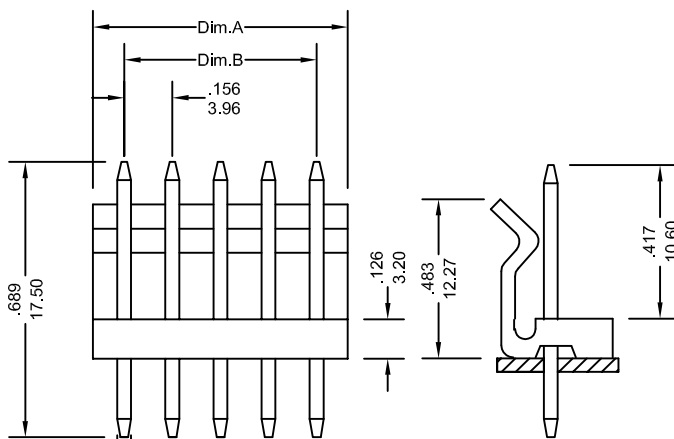
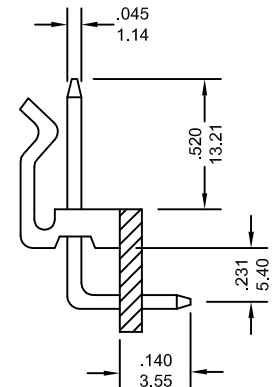
#### SPECIFICATIONS:

- . Current rating: 7A AC, DC
- . Voltage rating: 250V AC, Maximum
- . Temperature range: -40°C ~ +105°C
- . Contact resistance: Initial Value/10mΩ max.  
After environmental testing /20mΩ max.
- . Insulation resistance: 5000 MΩ min
- . Withstand voltage: 1500V AC/minute
- . Applicable PC board thickness: .063"[1.6mm]

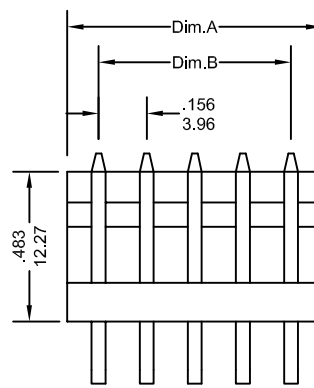
UNIT: INCH  
MM



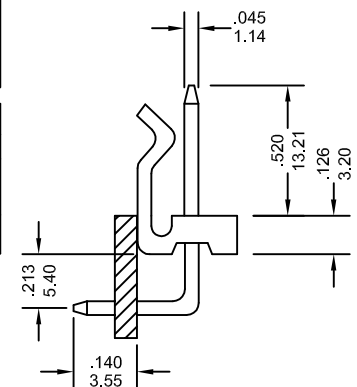
(R:Right Angle) [A]



(S: Straight)

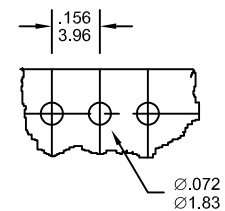


(R1:Right Angle) [B]



### Ordering Information 2400 Series

Series No.	No. of Contacts	Contact Type	Contact Plating	Contact Pin	
2400	- 04P	S	G1	R	- PB
2400 Series	02P ~ 25P	S: Straight R: Right Angle [A] R1: Right Angle [B]	T: Tin G1: Gold Flash G5: 5u" Gold G10: 10u" Gold G15: 15u" Gold G30: 30u" Gold [G: Full Gold]	R: Round pin	RoHs
* PIN LENGTH CAN BE CHANGED TO CUSTOM'S SPECIFICATION					



Recommended P.C Board Hole Dimensions

### Dimensional Information

Circuits	Dim.A± .008 0.20	Dim.B± .008 0.20	Circuits	Dim.A± .008 0.20	Dim.B± .008 0.20	Circuits	Dim.A± .008 0.20	Dim.B± .008 0.20
2	.312 7.92	.156 3.96	3	.468 11.88	.312 7.92	4	.624 15.84	.468 11.88

2400 Series

\* FOR CIRCUIT SIZES 5 THROUGH 25 ADD .156" OR 3.96MM FOR EACH ADDITIONAL PIN.