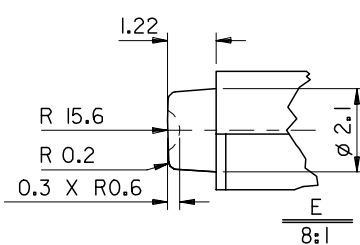
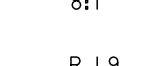
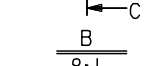
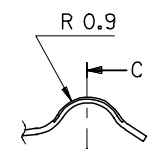


ITEM	COMPONENT	QTY	MATERIAL
1	HOUSING	1	LIQUID CRYSTAL POLYMER (LCP) 30% GLASS FILL, UL94 V-0, COLOUR: BLACK
2	TERMINAL	8	0.15 PHOSPHOR BRONZE, 0.1um MIN Au OVER Pd/Ni IN CONTACT AREA 2.5um MIN Sn ON SMT TAILS.
3	PUSH BUTTON	1	GF NYLON 46, YELLOW
4	COIL SPRING	1	0.25 STAINLESS STEEL
5	PUSH ROD	1	0.4 STAINLESS STEEL
6	C-PIN	1	STEEL
7	LEVER	1	0.4 STAINLESS STEEL



MOD TO SIGNAL CORE  
 EC NO: E2005-0999  
 DRWN: FUGGAN  
 CHKD:  
 APPR: EFOLAN  
 2005/08/24  
 2005/08/29  
 2005/09/05

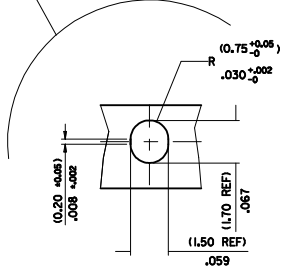
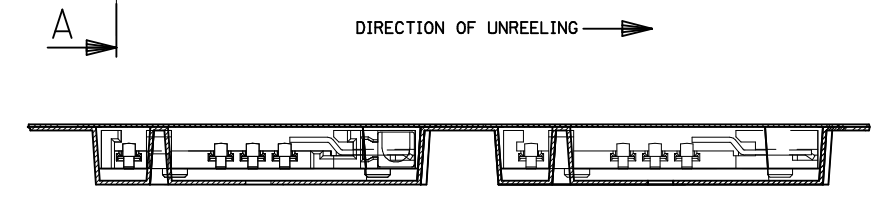
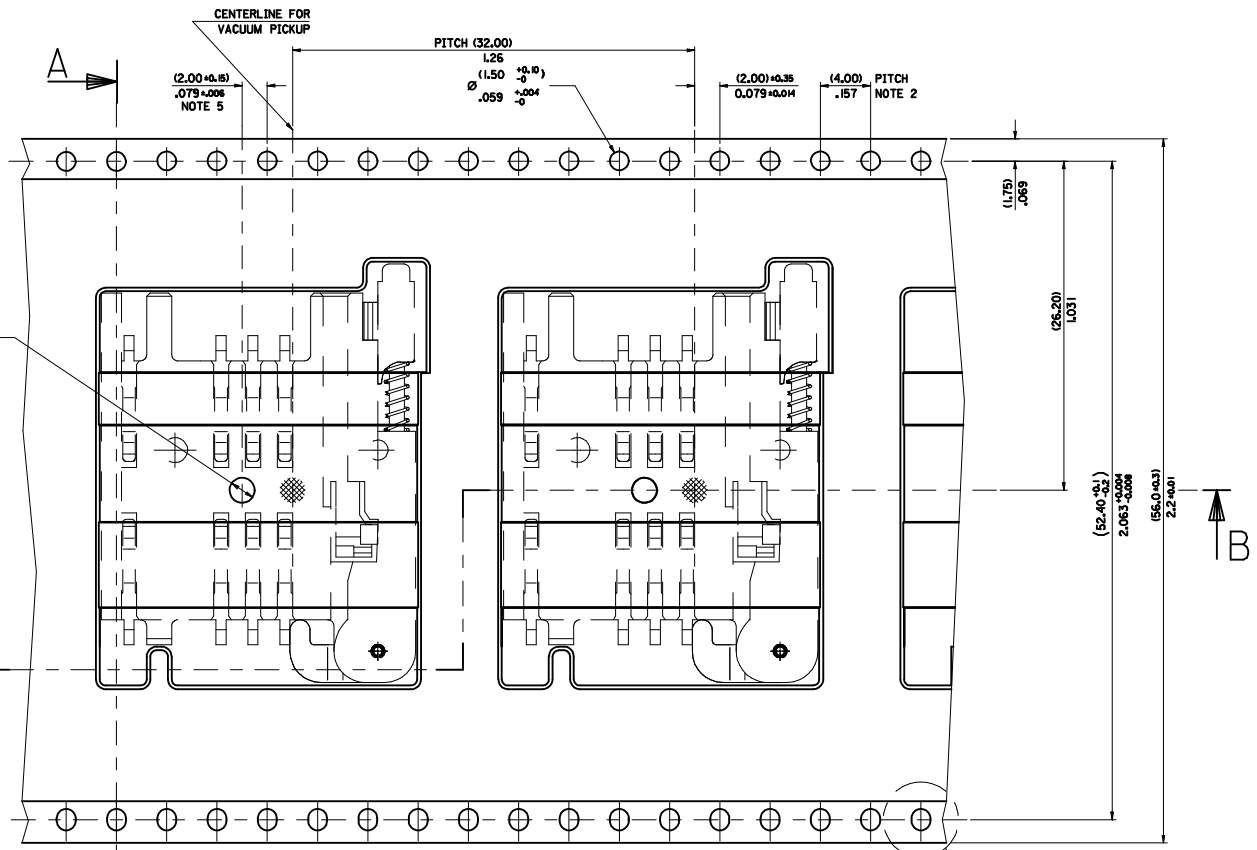
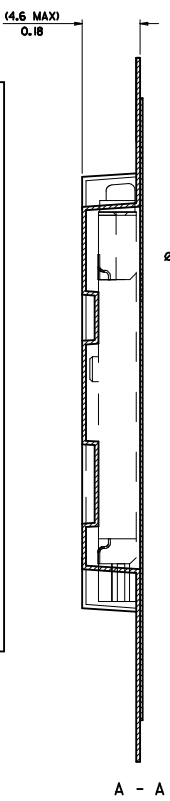
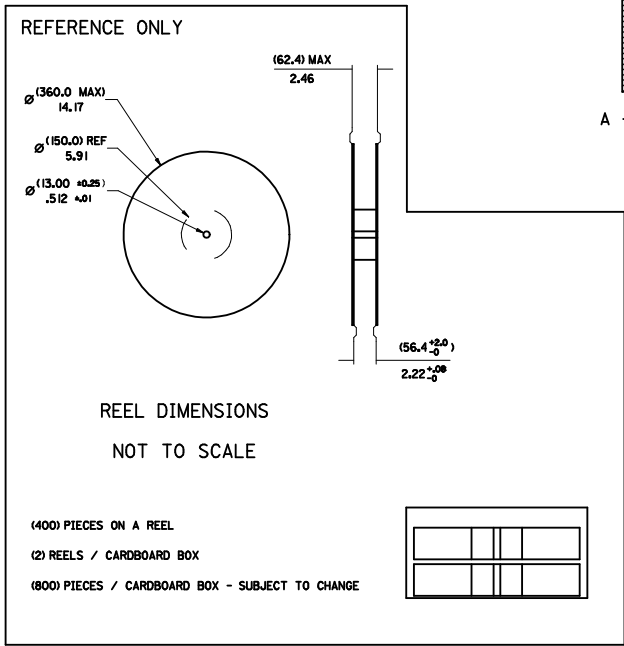
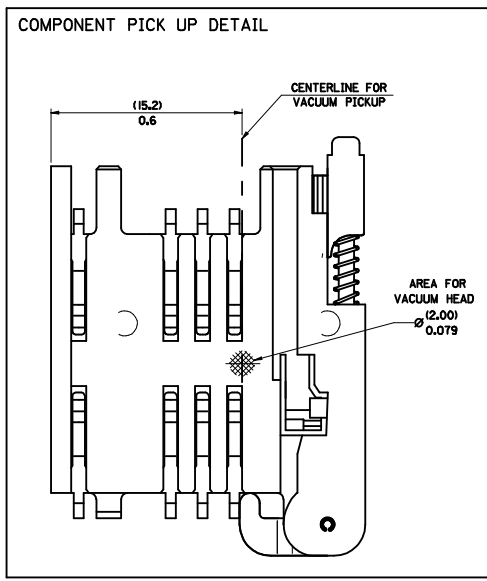
QUALITY SYMBOLS  
 ▽=0  
 ▽=0

GENERAL TOLERANCES (UNLESS SPECIFIED)	
mm	INCH
4 PLACES ± ---	± ---
3 PLACES ± ---	± ---
2 PLACES ± 0.05	± ---
1 PLACE ± 0.10	± ---
ANGULAR ± 2 °	

DIMENSION STYLE	
MM ONLY	
DRAWN BY	DATE
JM	1996/09/16
CHECKED BY	DATE
JM	1996/09/16
APPROVED BY	DATE
MW	1996/09/16

SCALE	DESIGN UNITS	THIRD ANGLE PROJECTION
4:1	METRIC	☉
SIM PCB CONNECTOR		
MOLLEX INCORPORATED		
MATERIAL NO.	DOCUMENT NO.	SHEET NO.
91228 0001	SDA-91228	1 OF 5
DRAFT WHERE APPLICABLE MUST REMAIN WITHIN DIMENSIONS		
THIS DRAWING CONTAINS INFORMATION THAT IS PROPRIETARY TO MOLEX INCORPORATED AND SHOULD NOT BE USED WITHOUT WRITTEN PERMISSION		

PART NO	DESCRIPTION
91228-0001 & 91228-3001	SIM CONNECTOR WITHOUT PEGS
91228-0002 & 91228-3002	SIM CONNECTOR WITH PEGS
91228-0012 & 91228-3012	SIM CONNECTOR WITH PEGS
91228-0007 & 91228-3007	SIM CONNECTOR WITH PEGS



- NOTES:
- 1) MATERIAL :  
CARRIER TAPE : VOLUME CONDUCTIVE POLYSTYRENE, 0.40 REF THICK, BLACK  
COVER TAPE : COLD SEAL POLYESTER, 0.08 REF THICK TRANSPARENT
  - 2) PITCH TOLERANCE OVER ANY 10 PITCHES ± 0.2 MM
  - 3) PEEL FORCE OF THE COVER TAPE IS 0.1 N TO 1.0 N  
AT A MAXIMUM REEL SPEED OF 300 MM/MIN ± 10%
  - 4) PACKAGING SPEC, PK-91228-002
  - 5) REFERENCE TO IEC 286-3 EXCEPT WHERE NOTED

MOD REV. LEVELS	QUALITY SYMBOLS	GENERAL TOLERANCES (UNLESS SPECIFIED)		DIMENSION STYLE		SCALE	DESIGN UNITS	THIRD ANGLE PROJECTION
		mm	INCH	MM/IN	MM/IN			
E2009-0200	▽=0	4 PLACES ±	---	---	---	1:1	METRIC	
G2009-0174	▽=0	3 PLACES ±	---	---	---			
		2 PLACES ±	0.10	---	---			
		1 PLACE ±	0.20	---	---			
		ANGULAR ± 2 °						
		DRAFT WHERE APPLICABLE MUST REMAIN WITHIN DIMENSIONS						
		SEE CHART						
		THIS DRAWING CONTAINS INFORMATION THAT IS PROPRIETARY TO MOLEX INCORPORATED AND SHOULD NOT BE USED WITHOUT WRITTEN PERMISSION						

SCALE 10:1

MOLEX REEL

TO CUSTOMER ASSEMBLY MACHINE

BLISTER PACKAGING  
SIM CARD PCB HOUSING

MOLEX INCORPORATED

SDA-91228-9001

SHEET NO. 1 OF 4