

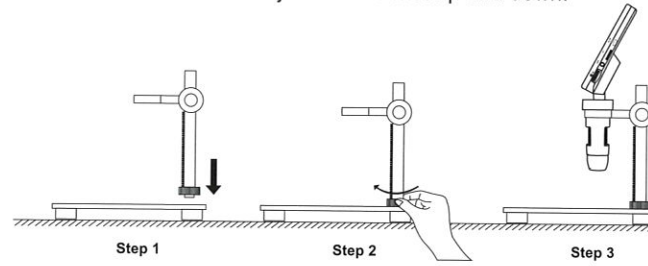
## Contents

<b>1. Installation</b> .....	03
Bracket installation.....	03
Microscope installation.....	03
Lampshade installation.....	04
Turn on auxiliary lights.....	05
<b>2. Parts and Functions</b> .....	06
Functions introduction.....	07
<b>3. Function Introduction of Remote Control</b> .....	08
Remote control buttons.....	08
Remote control buttons description.....	08
<b>4. Interface Introduction</b> .....	09
Playback mode.....	09
Menu interface.....	10
Function introduction.....	11
<b>5. Work with PC</b> .....	12
Software download.....	12
Operating steps.....	13
Function select.....	14
Function introduction.....	14
<b>6. Specifications</b> .....	15
<b>8. Warning</b> .....	16
<b>9. FAQ</b> .....	16

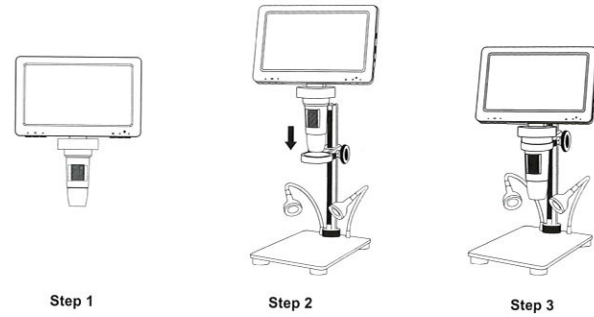
## 1. Installation

### ● Bracket installation

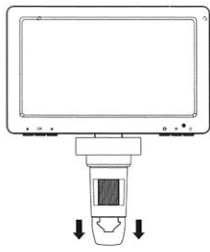
Rotate the knob to adjust the bracket up and down.



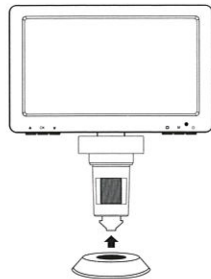
### ● Microscope installation



● Lampshade installation



① Remove the lens cap



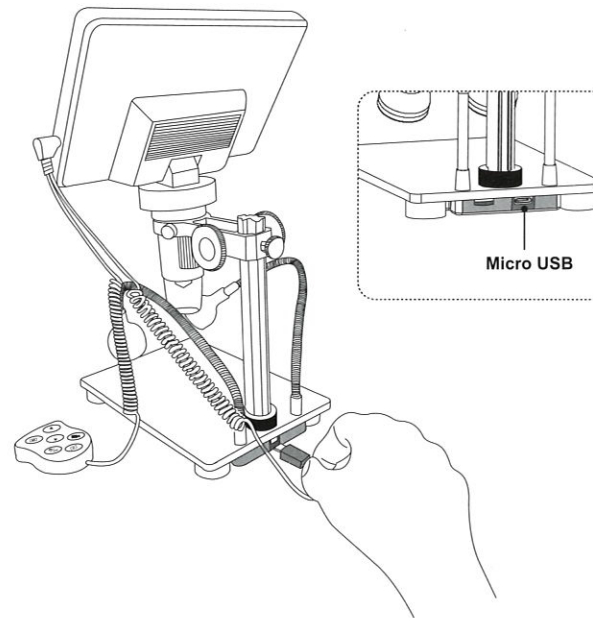
② Replace the light shield



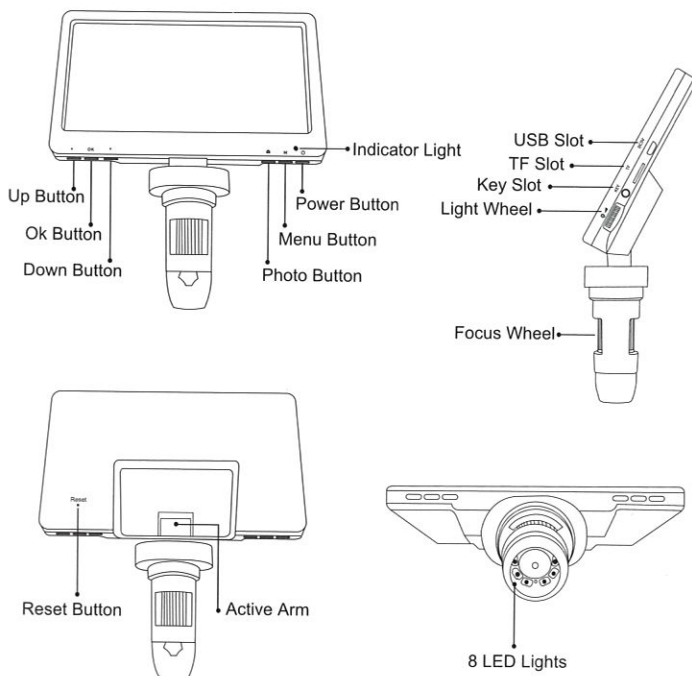
③ When installing, rotate left and right so that the buckle is completely stuck

● Turn on auxiliary lights

Please connect the remote control cable to the base first, and rotate the rotating wheel on the base.



## 2. Parts and functions



— 06 —

### ● Functions introduction

**Up/Down Button:** When entering the menu interface, it is the selection key.

**OK Button:** In photo mode, press this key to take a picture and save it automatically. In video mode, press this key to start/end recording. In playback mode, press OK to play the recording. When entering the menu interface, short press this key to confirm the selection.

**Photo Button:** After entering the photo mode in the power-on state, short press to take a picture.

**Menu Button:** Press this key to enter the menu interface, and press this key again to exit the menu or return to the previous layer; Long press this key to switch between Photo/Video/Playback mode.

**Indicator Light:** The indicator light is blue after power on; the indicator light is red after charging, green after full

**Power Button:** Long press this key for 3 seconds to start/shut down the device

**USB Slot:** Supports DC5V charging and USB data transmission. (Note: When the USB data cable is removed, the device will automatically shut down, which is a normal phenomenon. If you need to continue using the device, you can restart the device.)

**TF Slot:** Support up to 32G memory card (Note: Please choose C10 high-speed card)

**Key Slot:** The microscope is connected with the remote control and the external supplementary light of the support through this jack.

**Light Wheel:** Adjust this wheel to control the brightness of 8 LED lights.

**Focus Wheel:** Rotate this wheel to focus the object and adjust it slowly until the picture is clear.

**Reset Button:** When the device is abnormal, poke this hole with a fine pointed object to force shutdown.

**Movable arm:** Adjustable screen tilt angle.

**8 LED Lights:** When the ambient light is insufficient, it can fill light.

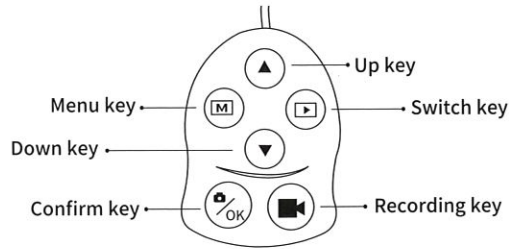
— 07 —

### 3. Function Introduction of Remote Control

#### ● Remote control buttons

##### Note:

1. Please fully insert the jack into the slot to prevent low battery alarm.
2. To turn on additional lights, first connect the remote control cable to the base, and then rotate the rotating wheel on the base.



#### ● Remote control buttons description

**Switch key:** In the power-on state, short press this key to switch between "video mode", "photo mode" or "file mode".

**Recording key:** In recording mode, short press this key to start recording and end recording.

**Confirm key:** In the photo mode, press this key to take photos and save files automatically. In video mode, short press this key to take video and then press the key to stop and save files. When you enter a menu, you can confirm the selection by short pressing this button.

**Up/Down key:** You can press this button to move your selection.

**Menu key:** This is a menu key, short press to enter/exit the menu.

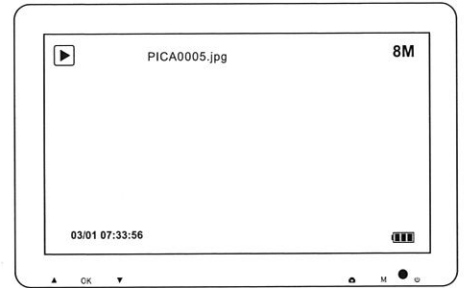
### 4. Interface Introduction

##### Note:

If you need to take pictures or videos, please insert the TF card first

#### ● Playback mode

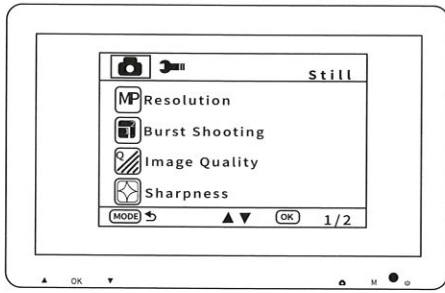
In working condition, switch between the **Photo/Video/Playback mode** by long pressing Menu button.



As shown in the fig, the stored information includes photos and videos, which can be switched between different photos and videos through the **Up/Down** button, and video can be played and paused by pressing **Photo** button.

## ● Menu interface

Press Menu to enter the menu interface, as shown in the fig,



Enter the setting interface in the **Photo** mode, you can modify pictures' parameters and general settings; Similarly, if you want to modify the video parameters, please enter the setting interface in the **Video** mode. After setting, short press the **Menu** button to exit the setting interface.

## ● Function introduction

**Video Resolution:** 1080FHD, 1080P, 720P.

**Photo Resolution:** 12M, 10M, 8M, 5M, 3M.

**Burst Shooting:** When this option is enabled, you can take 5 photos in a

**Image Quality:** High quality, Standard, Economic.

**Sharpness:** Intensive, Standard, Soft.

**ISO:** Auto, 100, and 200.

**Exposure Compensation:** There are 13 exposure compensation values from +2.0 to -2.0.

**Date Tag:** After selecting the date or date/time, photos and videos will have the date or date and time label.

**Delete/Protection:** In Playback mode, press Menu to enter Delete/Protection mode, you can choose to delete or protect the selected content; you can also choose to delete all or protect all, you can also unprotect

**Playback Mode:** Long press Menu button on the device or the Playback button on the remote control to reach Playback mode and view the photos or videos you have taken.

**Date/Time:** Sets the date and format/time parameters.

**Formatting:** Formats the memory.

**Automatic Shut-down:** After setting the automatic shutdown time, the device can automatically shut down when no one operates.

**Screen Protection:** Select the appropriate time, so that the device will automatically extinguish the screen when no one operates.

**Language Settings:** Set the device language.

**Light Source Frequency:** Mains frequency setting.

**Line Assist:** Display and hide the "+" line in the photo and video interface.

**Default Setting:** Restore factory Settings.

**Version:** View the version of the current software.

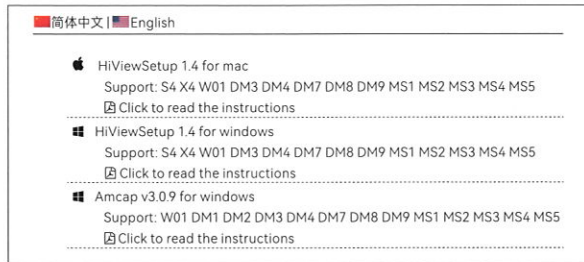
## 5. Work with PC

### ● Software download

#### Download the applicable software

① For Windows 8, Windows 10 or higher system, search "hiView" (H) in the Microsoft Store to download it.

② For Windows 7, download the software from the website:  
<http://soft.hvscam.com>



③ For Mac OS X 12 or higher system, search "hiView" in the APP Store to download it.

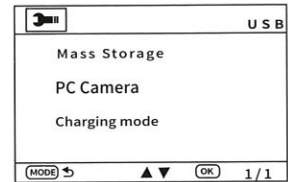
### ● Operating steps

#### Step 1

Connect the microscope to the PC with a USB cable.

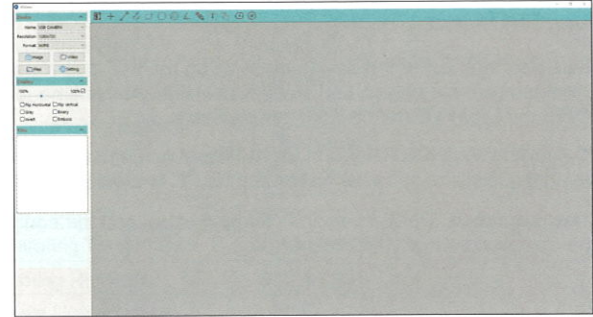
#### Step 2

Power on DM9, Select "PC Camera" on DM9.



#### Step 3

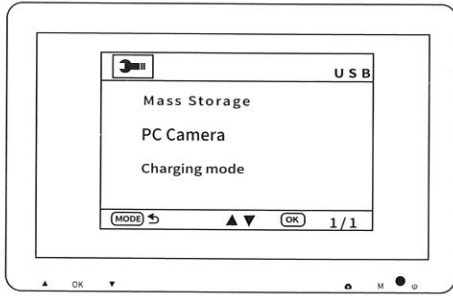
Run hiView, then you can click Photo or Video on your computer to take photos and videos, which will be saved on your computer disk.





● **Function select**

When the device is connected to the computer through a USB cable, the device can be used in **Mass Storage / PC Camera / Charging mode**.



● **Function select**

- ① **Mass Storage:** Enter the device memory on the PC, and you can view and process the photos and video files inside. At this time, only **ON/OFF** and **Light Wheel** on DM9 are available.
- ② **PC Camera:** only **ON/OFF** and **Light Wheel** on DM9 are available at this time. Open the software hiView on the PC to display the image.
- ③ **Charging mode:** DM9 enters the charging state, and the equipment can be operated normally if necessary.

**Specifications**

Item	Specifications
Name	DM9
The biggest pixel	1080FHD
Lens Optical Size	1/4"
Photo Resolution	3M, 5M, 8M, 10M, 12M
Video Resolution	720P, 1080P, 1080FHD
Data Format	AVI
Focusing Mode	Manual
Picture Format	JPG
Light Source	8 LED lights (adjustable brightness)
Focusing Range	10~40mm(to watch the distant view)
PC Resolution And Image Transfer Rate	1280*720/26fps
White Balance	Automatic
Exposure	Automatic
PC Operating System	Win7, Win 8.1, Win10 or higher, Mac OS x 12 or higher
Support Language	13 languages
USB Interface	Micro/usb2.0
Operating Temperature	-20°C ~ +60°C
Working Humidity	30%~85%Rh
Power Consumption	1.95W