

GTS-A2 Series

Diameter Ø38mm Double Shaft Ø 6mm

■ Features

- Double out Shaft, Easy installation
- 2 quadrature output channel (A&B)
- Used in combination with bracket and wheels
- Resolution 100, 200, 300, 360, 400, 600 PPR

■ Specification



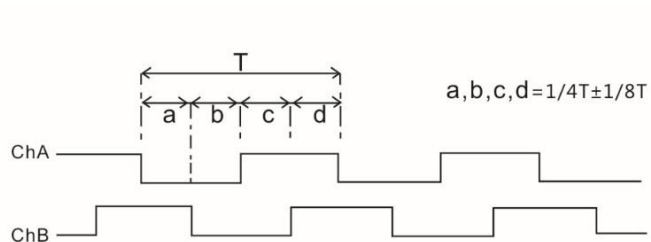
Brand	GTEACH	
Item	Diameter 38mm double out shaft 6mm type incremental rotary encoder	
Resolution(P/R)	100 200 300 360 400 600	
Output Phase	AB Phase	
Output Type	NPN Open Collector, Voltage, Push-pull, Line driver 5V	
Electrical	Supply Voltage	5-24VDC
	Current consumption	Max. 40mA
	Response frequency	Max. 20Khz
	Allowable revolution	Max. 2000 rev/min
Mechanical	Starting torque	Max. 20gf.cm (0.002N.m)
	Rotor inertia	Max. 35g.cm ² (3.5*10 ⁻⁶ kg.m ²)
	Shaft loading	Radial: Max. 2kgf Thrust: Max. 1kgf
	Mechanical Speed	Max. 5000 rev/min (*1)
Environmental	Ambient temperature	-10~70 (at non-freezing status), Storage:-25~85
	Ambient humidity	35~85%RH, Storage: 35~90%RH
	Protection	IP52 (IEC standard)
	Vibration	1.5mm amplitude at frequency of 10-55 Hz in each of X,Y, Z direction for 2 hours.
	Shock	Max. 50G
Unit weight	Approx.: 160g	
Cable	2.0m (The cable length can be customized)	
Connection	Cable outgoing type	
Insulation resistance	Min. 100MΩ (at 500VDC)	
Approval	CE ROHS	

(*1) Mechanical speed > Allowable revolution, Please take allowable speed as standard when use

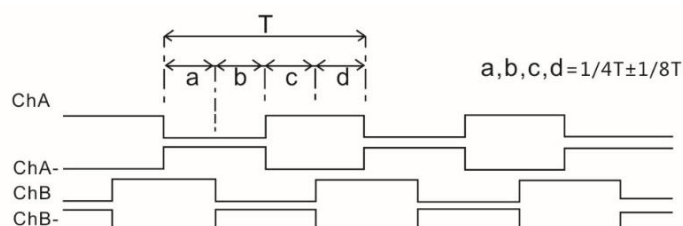
Ordering information

GTS-	06-	OC-	RA600A2-	2M
Series	Shaft	Output type	RESOLUTION	Cable Length
GTS	06: 6mm	OC: NPN VE: Voltage OP: Push-Pull LD: Line driver 5V	100, 200, 300, 360, 400, 600	2M: 2 meters

Output Waveform

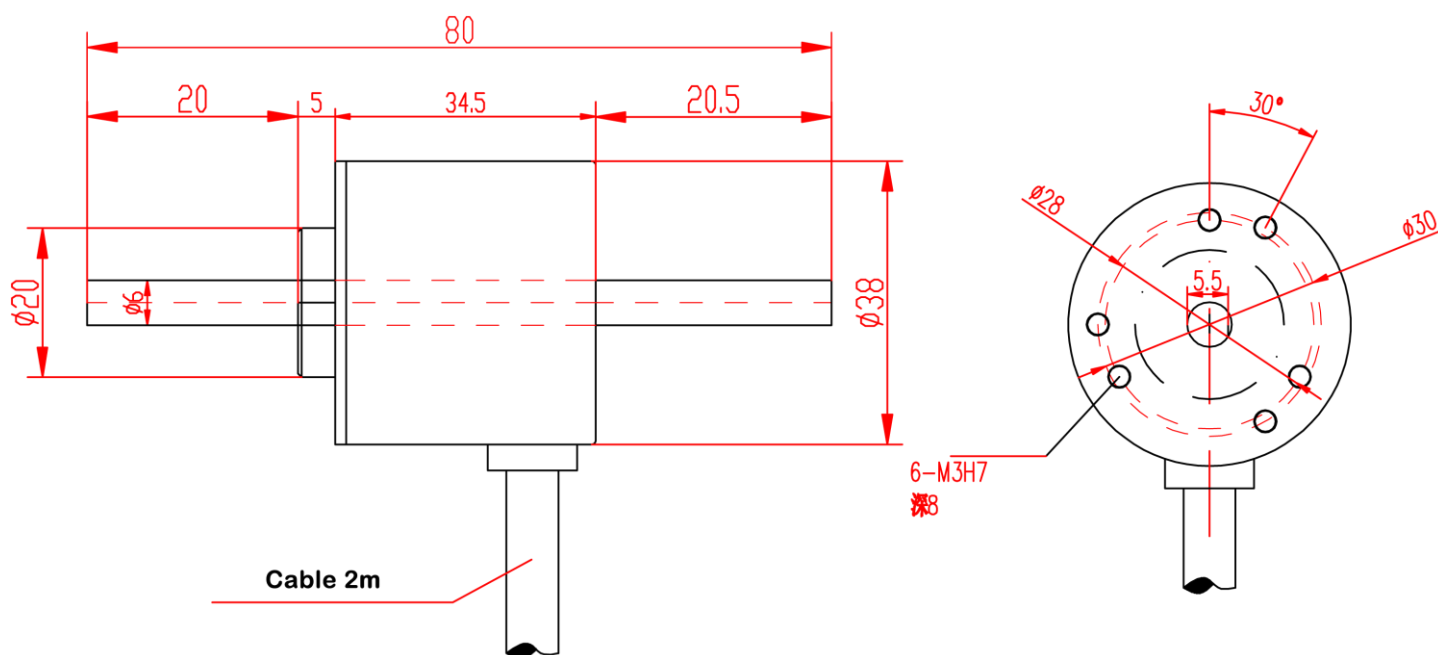


• Voltage type



• Line driver type

Dimension



Contact Us

Ji Nan Kesheng Automation Technology Co., Ltd.

Email: zhang@sdgtech.com or jn_syjm@163.com

QQ: 1485073899

Phone: +86-155-8888-8229

Skype: jn_syjm@163.com

Whatsapp: +8615588888229

Website: <https://sdgtech.en.alibaba.com>