

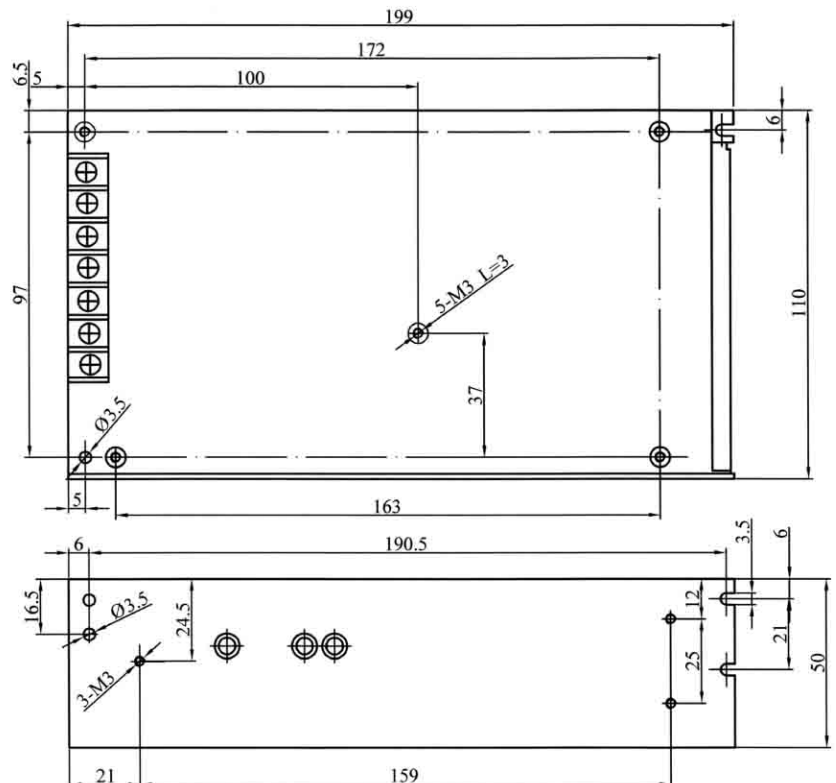
150W Single Output Certified Power Supply

- AC Input Range Selectable By Switch
- EMI Meets EN55022(CISPR22) Class B
- Low Power Consumption
- Approvals: UL / CUL / TUV / CB/ CE
- Protections: Over Load / Over Voltage / Short Circuit
- 100% Full Load High Temperature Burn-in Test
- 2 Years Warranty



| | |
|---------------------------------|---|
| Input Voltage Range | 88~132VAC/ 176~264VAC Selectable By Switch |
| Input Frequency | 47-63Hz |
| Inrush Current | Cold Start, 30A/ 115VAC, 50A/ 230VAC |
| Output Adjustment Range | ±10% Rated Output Voltage |
| Line Regulation | ≤0.5% |
| Output Over Load Protection | 105%~150% Shut Off, AC recycle To Re-Start |
| Output Over Voltage Protection | 115%~145% Rated Output Voltage |
| Output Short Circuit Protection | Shut Off, AC recycle To Re-Start |
| Rise, Hold Up Time | 50mS, 20mS at Full Load (Typical) |
| Hi-pot Isolation | I/P-O/P: 3KVAC, I/P-FG: 1.5KVAC, O/P-FG: 0.5KVAC |
| Operating Temperature Range | 0°C to +50°C@100%, -10°C@80%, +60°C@60% Load |
| Storage Temperature Range | -40°C to +85°C, 0 to 95%RH (Non-Condensing) |
| Safety Standards | UL60950-1, TUV EN60950-1 |
| EMC standards | EN55022 class B, EN61000-3-2,3 EN61000-4-2,3,4,5,6,8,11,ENV50204 |
| Cooling Method | Free Air Cooling Convection |
| Weight | 0.8Kgs/pcs |

| Product model | DC output | Load regul. | R&N | Efficiency |
|---------------|--------------|-------------|-------|------------|
| HTS-150F-3.3 | 3.3V, 0~30A | 1.5% | 100mV | 72% |
| HTS-150F-5 | 5V, 0~30A | 1% | 100mV | 78% |
| HTS-150F-7.5 | 7.5V, 0~20A | 1% | 100mV | 80% |
| HTS-150F-9 | 9V, 0~16.5A | 1% | 100mV | 80% |
| HTS-150F-12 | 12V, 0~12.5A | 0.5% | 120mV | 82% |
| HTS-150F-13.5 | 13.5V, 0~11A | 0.5% | 120mV | 83% |
| HTS-150F-15 | 15V, 0~10A | 0.5% | 150mV | 84% |
| HTS-150F-24 | 24V, 0~6.5A | 0.5% | 150mV | 85% |
| HTS-150F-27 | 27V, 0~5.6A | 0.5% | 200mV | 86% |
| HTS-150F-48 | 48V, 0~3.1A | 0.5% | 200mV | 87% |



notes:

1. All dimensions in mm.

2. Tolerance (except cable length): xx = ±0.04

xxx = ±0.010