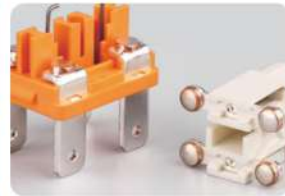




加粗镀银插脚



高阻燃环保材料PA66、专用插件



加粗银触点



定制产品



氧化黑外壳

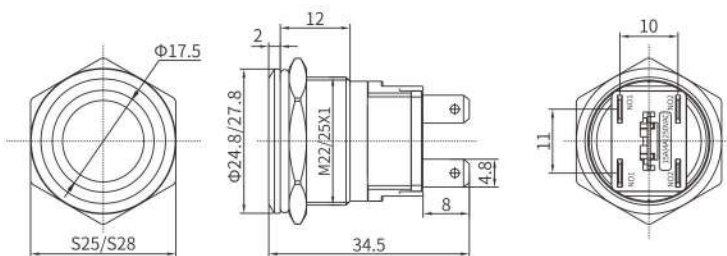
型号说明/选型，写法举例：LB22C-P10Z/ER9-24V/S(L)

对应编号	LB	●●	●	-	●	●●	●	/	●	●	●●	/	●	L	
	1	2	3		4	5	6		7	8	9		10	11	
1	LB	LANBOO 蓝波代码													
2	安装孔径	22、25mm													
3	系列号	C—并联灯脚大电流系列													
4	头部形状	P—平头，G—高头													
5	开关组合	20—2NO常开触点，慢动双触点													
6	动作形式	Z—自锁式（保持式）F—自复式（点动式）													
7	发光形状	E—环形、E+DY—环形+电源符号													
8	发光颜色	R—红色、G—绿色、B—蓝色，定制：Y—黄色、W—白色													
9	LED 电压	9-24V、220V,定制：3-8V、25-48V、110V, AC/DC 通用													
10	外壳材质	S—不锈钢、N—铜镀铬、A—铝氧化													
11	(L)	内部代码													

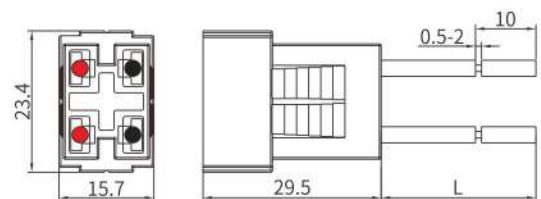
性能参数

开孔直径	对应孔径+0.2mm,例如：LB22C为22.2mm
外壳	304不锈钢 (RoHS)、H57/59铜镀铬、6063铝氧化 (RoHS)
按键	304/316不锈钢 (RoHS) (6063铝氧化 (RoHS))
透光材料	PC(RoHS),V2级阻燃
螺母	H57/59铜镀镍，可定制：304不锈钢 (RoHS)
O型圈	硅胶 (RoHS)
触点	银氧化锡AgSnO2(RoHS)
底座	PA66(RoHS),V0级阻燃

引脚	H65镀银 (RoHS)	
安装面板厚度	≤9mm	
拧紧力矩	0.8-1.2N.m	
螺纹验证	将螺母锁紧至垫圈明显变形, 然后拆下, 如此循环 5 次, 无异常	
动作行程	总行程: 3.5±0.1mm, 接通过程: 1.3±0.2mm	
按压力	9±0.8N	
接线形式	引脚式, 可选配套接插件	
耐焊性	≤380°C(25~50W 电烙铁) ≤2 秒	
插片可焊性试验	各引脚分别焊接 1mm ² 电线, 80N 正向拉力后, 无脱落	
与线束的配合试验	150mm 线长, ≤50mΩ, LED 灯通电无闪烁, 拉开力: 40~70N	
引脚反向推力	≥80N 无位移, 1min	
头部防脱顶牛	≥200N, 1min	
工作环境温度	-40°C~+80°C, 非真空状态、不结冰情况下	
工作环境湿度	45~90%RH	
贮存环境温度	包装完好情况下, -40°C~+55°C	
贮存环境湿度	包装完好情况下, 45~90%RH	
防护等级	IP65(可定制 ip67), Ik10	
约定发热电流	I _{th} : 20A, 250VAC	
电阻性负载	AC-15: 110V/220V: 15A	DC-13: 12V/24V: 15A
电感性负载	AC-15: 110V/220V: 4A	DC-13: 110V: 4A
接触电阻	≤50mΩ	
绝缘电阻	≥1000MΩ	
抗电强度(工频耐压)	3000VAC, 50HZ, 1min	
触点最小适用负载	3V AC/DC, 5mA(参考值, 取决于环境与负载情况)	
耐振性	XYZ 三向, 60HZ, 振幅 2mm	
产品防跌落	头部竖直跌落 1 米, 3 次, 能正常工作	
包装跌落	600mm 高度连续跌落 4 次, 产品无损坏	
温升	按 GB/T14048.5 标准中 8.3.3.3 条款	
盐雾试验	72h, 3 个周期, (参考 GB/T 2423.18-2012)	
低温试验	-40°C, 96h, 接触电阻 ≤200mΩ、按压力变化值 ≤30%, LED 正常	
高温试验	80°C, 96h, 接触电阻 ≤200mΩ、按压力变化值 ≤30%, LED 正常	
高低温冲击试验 (含 LED 灯加速老化试验)	-40~+85°C, 85%RH, 40min/循环, 50 个循环, 接触电阻 ≤200mΩ、按压力变化值 ≤30%, LED 正常	
电气寿命	阻性负载 (参考 GB/T14048.5) AC220V/15A、DC24V/15A: 2万次; AC220V/8A、DC24V/8A: 4万次; AC220V/3A、DC24V/3A: 10万次	
机械寿命	自锁: 30万次, 自复: 100万次, (参考 GB/T14048.5)	
极限按压测试	在底部保持 5s 时间, 再松开, 4 次/min, 进行 2000 次试验	
ESD 静电	人体模式: 2KV, 可定制 8KV	
LED 额定电流	≤24V, ≤20mA; >24V, ≤10mA	
LED 灯珠类型	贴片无极双芯片 LED	
LED 降压方式	内置降压电阻	
LED 寿命	≥50000h(参考值)	
产品认证	CCC CE RoHS(定制) REACH(定制)	
专利号	ZL201720076061.5、ZL201730443156.1、ZL201821492330.7	
质保	66 个月	



外形尺寸


 接插件线长默认150mm, 1.5mm², 可做其他线长

接插件



中国·蓝波
LANBOO

蓝波大电流开关

Pioneer of High-Current Switches

CCC CE RoHS Intertek ISO9001 多项专利

LB22C/25C 规格书

15A大电流金属按钮开关

外壳:304不锈钢外壳,H57/59铜镀铬,6063铝氧化黑
304 stainless steel housing, H57/59 copper chrome, 6063 black aluminum oxide,

按键:316不锈钢,铝氧化黑
Shell:316 stainless steel, aluminum oxide color

PC透光罩
PC diffuser, V2 Flame Retardant

无极灯珠贴片LED
Non-polar LED

桃心,自锁机构
Latching Mechanism

高强度不锈钢弹簧
High strength stainless steel spring

H65镀银插脚
H65 Silver-plated pin

双锁钩设计
Double Locking Hook

加粗静触点:银氧化锡AgSnO₂(RoHS)
Bold static contact: Silver tin oxide

专用接插件Connector
PBT+GF20 (V0)

硅胶密封圈
Silicone seal ring

H57铜镀镍六角螺母
Hexagon nut in nickel plating

硅胶密封圈
Silicone seal ring

PA66底座(V0阻燃)
Base/V0 Flame Retardant

PCB

加粗动触点:银氧化锡AgSnO₂(RoHS)
Bold moving contact: Silver tin oxide



Laser engraving custom characters



Blod Pins/15Amp



Connector PA66



Silver Contact



Custom Products



Oxidized black shell

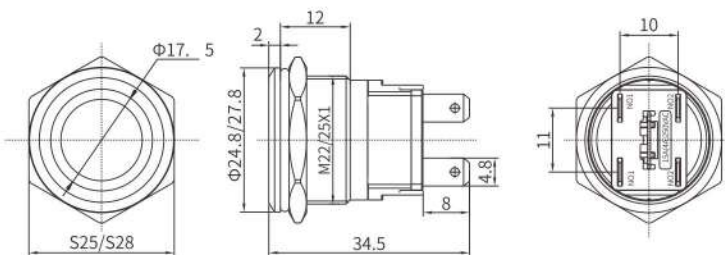
Model Description/Selection, Example:LB22C-P10Z/ER9-24V/S(L)

The Corresponding Number	LB	●●	●	-	●	●●	●	/	●	●	●●	/	●	
	1	2	3		4	5	6		7	8	9		10	
1	LB	LANBOO												
2	Install Diameter	22、25mm												
3	Series No.	C - Parallel leg high current series												
4	Head Shape	P - flat head, G - tall head												
5	Switch Combination	20-2NO normally open contact, slow-moving double contact												
6	Operation Type	Latching, Momentary												
7	Luminous Shape	E - Ring, E+DY - Ring + power symbol												
8	LED Color	R -Red, G -Green, B -Blue, Custom: Y -Yellow, W -White												
9	LED Voltage	9-24V, 220V, customized: 3-8V, 25-48V, 110V, AC/DC general purpose												
	Shell Material	S - stainless steel, N - copper chrome plating, A - aluminum oxidation												
11	(L)	Internal code												

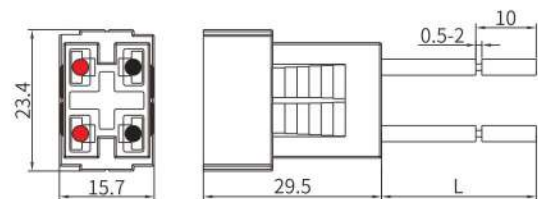
The performance parameters

Hole Diameter	Corresponding aperture +0.2mm, for example: LB22C is 22.2mm
Shell	304 Stainless steel (RoHS), H57/59 Copper chrome plating, 6063 Aluminum oxidation (RoHS)
Key	304/316 Stainless steel (RoHS), 6063 Aluminum oxide (RoHS)
Pervious To Light Material	PC (RoHS), V2 flame retardant
Nut	H57/59 Nickel copper plating, customizable: 304 stainless steel (RoHS)
O-Ring	Silica gel (RoHS)
Contact Material	AgSnO2 silver oxide (RoHS)
Base Seat	PA66 (RoHS), Grade V0 flame retardant

Pins Material	H65 Silver Plating (RoHS)	
Mounting Panel Thickness	≤9mm	
Nut Tightening torque	0.8-1.2N.m	
Thread Verification	Lock the nut until the washer is visibly deformed, then remove the nut. Repeat 5 times no abnormalities	
Action Stroke	Total stroke: 3.5±0.1mm, connecting stroke: 1.3±0.2mm	
Operation Pressure	9±0.8N	
Connection Mode	Pins , Special connector can be selected	
Soldering Resistance	≤380°C(25~50W) ≤2 Seconds,	
Pins Welding Strength	Each pin is welded with 1mm ² wire, 80N forward tension without falling off	
Matching test with wiring harness	Wires length 150mm ² , ≤50mΩ, Power on, LED flicker free, 40~70N	
Pin Reverse Thrust	≥80N, 1min	
Head Anti-off Strength	≥200N, 1min	
Working Environment Temperature	-40°C~+80°C, Non-vacuum, non-freeze	
Working Environment Humidity	45~90%RH	
Storage Ambient Temperature	Packing in good condition, -40°C~+55°C	
Storage Ambient Humidity	Packing in good condition, 45~90%RH	
Protection Level	IP65(customizable IP67), IK10	
Rated thermal current	I _{th} : 20A, 250VAC	
Resistive Load	AC-15: 110V/220V: 15A	DC-13: 12V/24V: 15A
Inductive Load	AC-15: 110V/220V: 4A	DC-13: 110V: 4A
Contact Resistance	≤50mΩ	
Insulation Resistance	≥1000MΩ	
Dielectric Strength	3000VAC, 50HZ, 1min	
Min. Applicable Load For Contact	3V AC/DC, 5mA (Reference value, depending on the environment and load)	
Resistance To Vibration	XYZ, 60HZ, The amplitude 2mm	
Product Fall-Proof	Head vertical drop 1 meter, 3 times, can work normally	
Packaging Fall-Proof	600mm height continuous drop for 4 times, no damage to the product	
Temperature Rise	According to clause 8.3.3.3 in GB/T14048.5 standard	
Salt Spray Test	72H, 3 cycles (refer to GB/T 2423.18-2012)	
Low Temperature Test	-40°C, 96h, Contact resistance ≤200mΩ, Change in pressure ≤30%, LED Normal	
High Temperature Test	80°C, 96h, Contact resistance ≤200mΩ, Change in pressure ≤30%, LED Normal	
High And Low Temperature Impact Test	-40~+85°C, 85%RH, 40min/Circulation, 50 Circulation, Contact resistance ≤200mΩ, Change in pressure ≤30% LED Normal	
Electrical Life	Resistive load (reference GB/T14048.5) AC220V/15A, DC24V/15A: 20,000 times; AC220V/8A, DC24V/8A: 40,000 times; AC220V/3A, DC24V/3A: 100,000 times	
Mechanical Life	Latching: 300000 times, Momentary: 1 million times, (Refer to GB/T14048.5)	
Limit Press Test	Keep 5s at the bottom, release again, 4 times /min, conduct 2000 tests	
ESD Electrostatic	Body mode: 2KV, Customizable 8KV	
LED Rated Current	≤24V, ≤20mA; >24V, ≤10mA	
LED Bead Type	Chip nonpolar dual chip LED	
LED Resistance	Built-in Resistance	
LED Life	≥50000h (Reference)	
Certificate	CCC CE RoHS REACH	
Patent No.	ZL201720076061.5、ZL201730443156.1、ZL201821492330.7	
Quality Assurance	66 Months	



Outline Dimension



Connector: Cable length: 150mm, 1.5mm², Other lengths can be customized

Connector