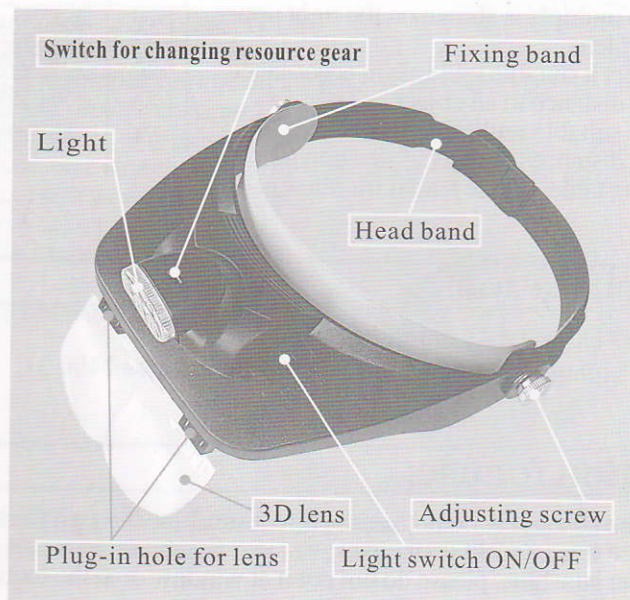


## Beginning:

Thank you very much for your purchasing the new multi-functional head magnifying glass. This new multi-functional head magnifying glass is very suitable for fishing, reading and gardening.

Please read the manual instructions carefully before using it correctly and safely.

- With three LED lamps and its light resource gear can be adjusted according to the necessity.
- An ordinary head magnifying glass can be installed only with two AAA batteries, whose voltage can be changed from 3V to 4.5V with an automatic voltage booster, which may result in quality problem easily. This head magnifying glass can be installed with three AAA batteries, whose voltage can reach to 4.5V, which can offer sufficient luminance.
- Comparing with ordinary LED light resource, this LED light resource has the characteristics as high luminance and wide resource area etc., so it has the functions of environmental protection and energy saving.



## ■ Features: ■



This product is a light head magnifying glass of wide-view scope with 3D lens and light (Weight: about 100g).

This product is developed and produced according to our company's production experiences for many years, is able to be used by the technicians in various fields or the workers in precise production fields.

For its simple use, it is broadly applied to manufacturing and processing precise products, and repairing camera, electric chemical product, electronic part of vehicle and computer etc.

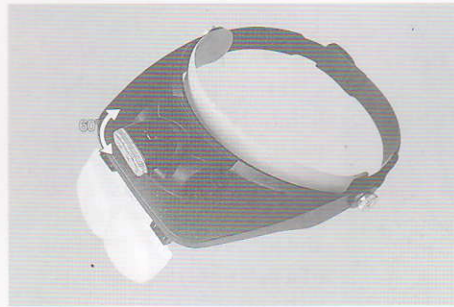
It's also suitable for the works of dentists, beast doctors and beauty staffs, jewel processing, sewing, embroidery, stamp collection, reading, drawing and so on. And it's also hoped that the fishing lovers with suitable ages can use this product.

You can also see small things without glasses. If you turn on the light, you can safely walk on a rough road at night, too.

The surface of lens has been processed specially. If its surface is dirty, please wash with soft paper or alcohol or water.

\* Note: Please avoid using volatilizable chemical detergents because they will deteriorate the surface of lens

## I . Using method of the light:

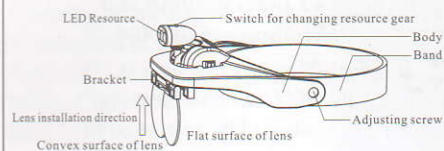


1. Referring to the figure (1) on the left, please adjust the UP and DOWN button with a hand.



2. You can turn the light left or right for 25 degree if you need.

### Soft tube for adjusting bulb



According to the usage you need, the bracket can be rotated upward or downward for 45 degree, and left or right for 25 degree. It is suggested that the LED should not be changed, because it can be continuously used for more than 3000 hours.

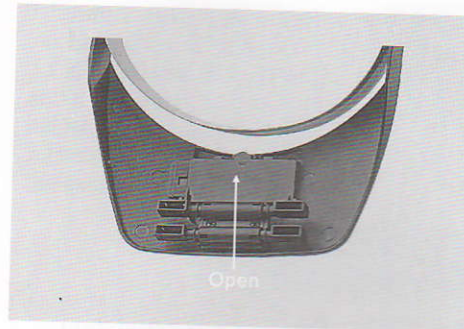
### ● The adjusting method of peanut bulb:

Please wrap the peanut bulb in soft tube, then rotate it, turn left if removing it, and turn right if installing it. In addition, please fix it firstly before using, because it often loosens when carrying and moving.

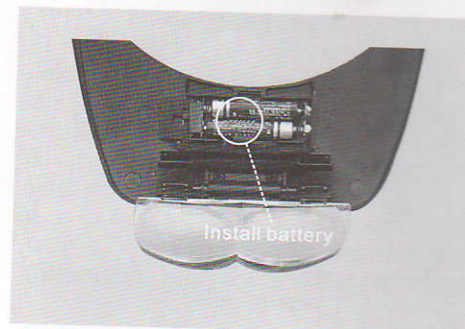
\*Make sure that the peanut bulb is not loose before using. If it is loose, it may occur that the light is ON sometime and OFF sometime, please wrap the peanut bulb in black soft tube and turn tight to the right. Please rotate the peanut bulb to the left and then remove it when replacing it.



## II. Change of battery:



1. When changing the battery, please open a hole of the width 10mm and the height 10mm below the position which is about 4mm to the battery cover with the signal  $\Delta$  and the word OPEN, and press there with the top of a ball pen, thus the cover will spring out, then open the cover with a hand.



2. After it's confirmed that the battery is installed correctly, close the battery cover, now the change of battery is finished.

3. Use the battery with Model AAA7 and 3LED light resource with 3.0-3.1V/20mA and luminance of 1400.



4. The waste battery should be retrieved in accordance with local stipulations after the battery is used out.

5. The switch is marked with ON and OFF for use, and please refer to figure (3).

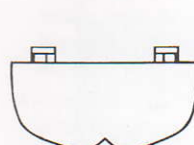
### III. Method of installing and removing lens.

#### 1. Installing the lens:

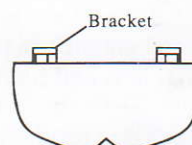
(1) Don't clean the surface of lens, put it upside down on soft paper or cloth.

(2) When installation, put the convex side of lens outward and put the flat side towards your eyes. (\*the side through which can read the multiple is the flat side.)

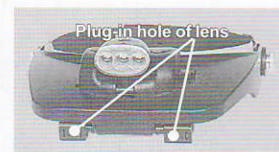
(3) Insert the bracket which is on the lens into the hole of the lens, at this time, the installation of lens is finished.



(Side: Outward)



(Flat side: Towards eyes)



(Reversed U type of groove can move up and down.)

2. Removing the lens: The steps are opposite to the above installation method. (Fingerprint can't be on the lens, and when taking the lens, use soft paper or protective paper.)

3. when installing or removing lens, keep the lens parallel to groove or make them on a straight line. If they are not parallel when installing, the upside of the lens will be damaged.

4. when installing, the lens is installed at bounce as figure (3). (Lens and plug-in hole of lens are on a straight line.)



\* Note: If this product falls on the ground, lens and bracket will be damaged easily, so please pay attention.

## IV. Adjustment of head band:

1. Fix the head band, press the band button printed with the word "OPEN" and adjust the length of band to fit the head. (Refer to figure(4))
2. fix the head band, grasp the band button printed with the word "OPEN" and move it to the direction of tightness, then fix the head band after hearing the sound of "khaki".
3. Head band has not the standard of looseness or tightness, please adjust the suitable length for a user.



## The multiple of lens:

1. The multiples of lens have four selections: 1.2X, 1.8X, 2.5X and 3.5X.
2. The multiple is shown on the right upper corner of lens.
3. Select a suitable multiple in accordance with the distance to an object.
4. The suitable multiples in accordance with the distances to objects are shown in the following table, please read it for reference.

Multiples	Distance to an object
1.2X	520-620MM
1.8X	230-320MM
2.5X	150-250MM
3.5X	80-120MM

## Specifications:

Battery: Three AAA7 batteries

3LED: voltage 3.0-3.1V, current 20mA, luminance 1400.3)

## Caution for use:

- Please absolutely do not see the direct sunshine through the lens because it may scald your eyes.
- Under sunshine, please do not put it at window or at the focus of combustibles.