

A

B

C

D

E

F

A

B

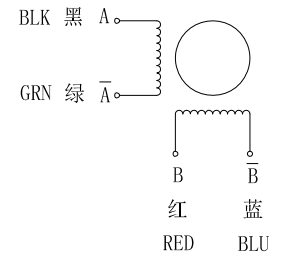
C

D

E

F

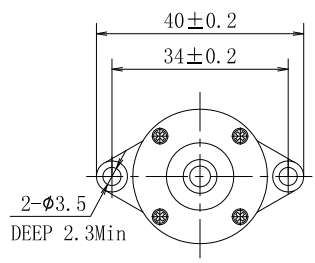
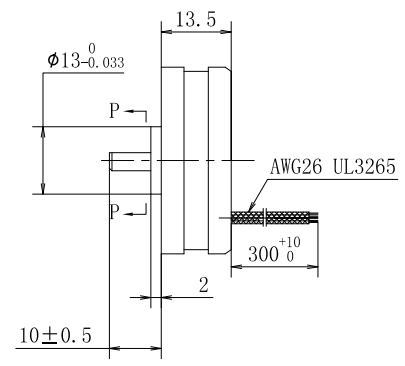
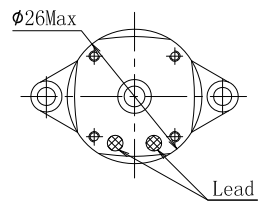
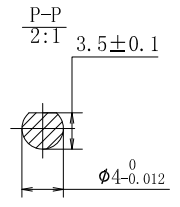
WIRING DIAGRAM/接线图



励磁顺序(2相励磁)VS. 旋转方向
EXCITING SEQUENCE (TWO PHASES) VS. Direction of Rotation

STEP	A	B	\bar{A}	\bar{B}
1	+	+	-	-
2	-	+	+	-
3	-	-	+	+
4	+	-	-	+

从安装面看为顺时针方向
Clockwise rotation from mounting side



电气特性参数/ELECTRICAL PARAMETER

步距角/STEP ANGLE	1.8° ±5%
相数/NO. OF PHASES	2
额定电压/RATED VOLTAGE	5.4 V
额定电流/RATED CURRENT	0.3 A
电阻/RESISTANCE	18 ohm ± 10% AT 25°C
电感/INDUCTANCE	3.2 mH ± 20% AT 1KHz, 1Vrms
保持力矩/HOLDING TORQUE	1.2 N.cm Typ. (TWO PHASE ON/RATED CURRENT)
绝缘耐压/DIELECTRIC STRENGTH	500VAC 1 分钟/MINUTE
绝缘电阻/INSULATION RESISTANCE	100 MΩ 以上/MIN.
绝缘等级/INSULATION CLASS	CLASS B
温度上升/TEMPERATURE RISE	80°C MAX.
转子惯量/ROTOR INERTIA	2.5 g.cm ²
重量/WEIGHT	50 g

备注/NOTE):

- 额定电流, 两相通电/AT RATED CURRENT, TWO PHASE ON.
- 热阻法: 电机安装在258*258*T5的铝板上, 电机线圈两端通额定电压, OPSS /MEASURED BY RESISTANCE METHOD. MOUNT WITH ALUMINUM HEAT SINK 258*258*T5 AT TWO WINDING BE EXCITED BY RATED VOLTAGE, OPSS, 2PHASE ON.
- 寿命测试条件: 整步, 运动速度为最大自启动频率, 轴承的表面温度不超过70°C LIFE TEST CONDITION: 2PHASE EXCITING, FULL STEP, AT MAX. STARTING PULSE, BEARING TEMPERATURE SHOULD BE 70°C MAX.

CONFIRMED&ACCEPTED BY CUSTOMER (客户确认&接受)					型号/MODEL			
COMPANY CHOP&SIGNATURE (盖章&签名)					PHB26K13-420-TB			
一般公差 TOLERANCE ±0.5/±3°	版本REV.	DATE 日期	变更内容	REVISION RECORD	设计BY	备注 NOTE	REV.	
设计/DESIGNED	张承翔/20170706	比例 SCALE			砺锋机电	Hybrid Stepper Motor		第一角画法 FIRST ANGLE METHOD
审核/CHECKED	杨飞锋/20170706	单位 UNIT	mm		PrimoPal Precision Motor Co., Ltd			
批准/APPROVED	娄德成/20170706							