



## SAW multimedia filters

### Series/Type: **K9356M**

The following products presented in this data sheet are being withdrawn.

| Ordering Code   | Substitute Product | Date of Withdrawal | Deadline Last Orders | Last Shipments |
|-----------------|--------------------|--------------------|----------------------|----------------|
| B39389K9356M100 |                    | 2011-01-14         | 2011-09-30           | 2012-09-30     |

For further information please contact your nearest EPCOS sales office, which will also support you in selecting a suitable substitute. The addresses of our worldwide sales network are presented at [www.epcos.com/sales](http://www.epcos.com/sales).



**SAW Components**

**K 9356 M**

**IF Filter for Audio Applications**

**38,90 MHz**

**Data Sheet**

**Standard**

- B/G
- D/K
- I
- L

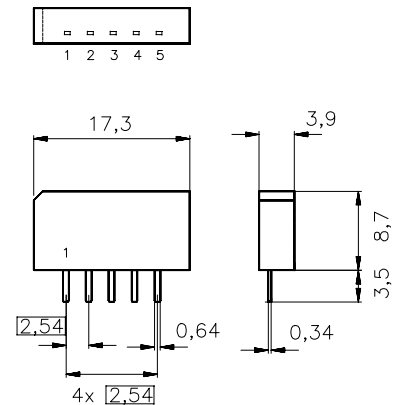
**Features**

- TV IF audio filter with passband for sound carriers at 32,40 MHz (D/K, L), 32,90 MHz (I) and 33,40 MHz (B/G)

**Terminals**

- Tinned CuFe alloy

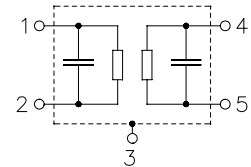
Plastic package **SIP5K**



Dimensions in mm, approx. weight 1,0 g

**Pin configuration**

- 1 Input
- 2 Input - ground
- 3 Chip - carrier ground
- 4 Output
- 5 Output



| Type     | Ordering code     | Marking and package according to | Packing according to |
|----------|-------------------|----------------------------------|----------------------|
| K 9356 M | B39389-K9356-M100 | C61157-A1-A15                    | F61074-V8067-Z000    |

**Maximum ratings**

|                            |           |         |    |                       |
|----------------------------|-----------|---------|----|-----------------------|
| Operable temperature range | $T_A$     | -25/+65 | °C |                       |
| Storage temperature range  | $T_{stg}$ | -40/+85 | °C |                       |
| DC voltage                 | $V_{DC}$  | 5       | V  | between any terminals |
| AC voltage                 | $V_{pp}$  | 10      | V  | between any terminals |



SAW Components

K 9356 M

IF Filter for Audio Applications

38,90 MHz

Data Sheet

Characteristics

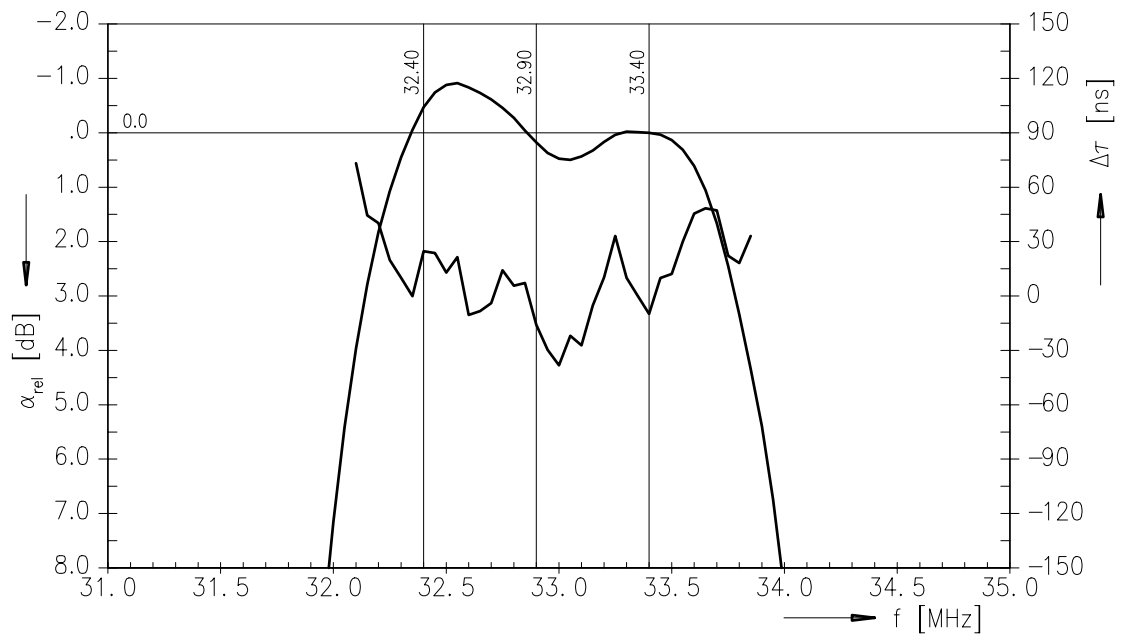
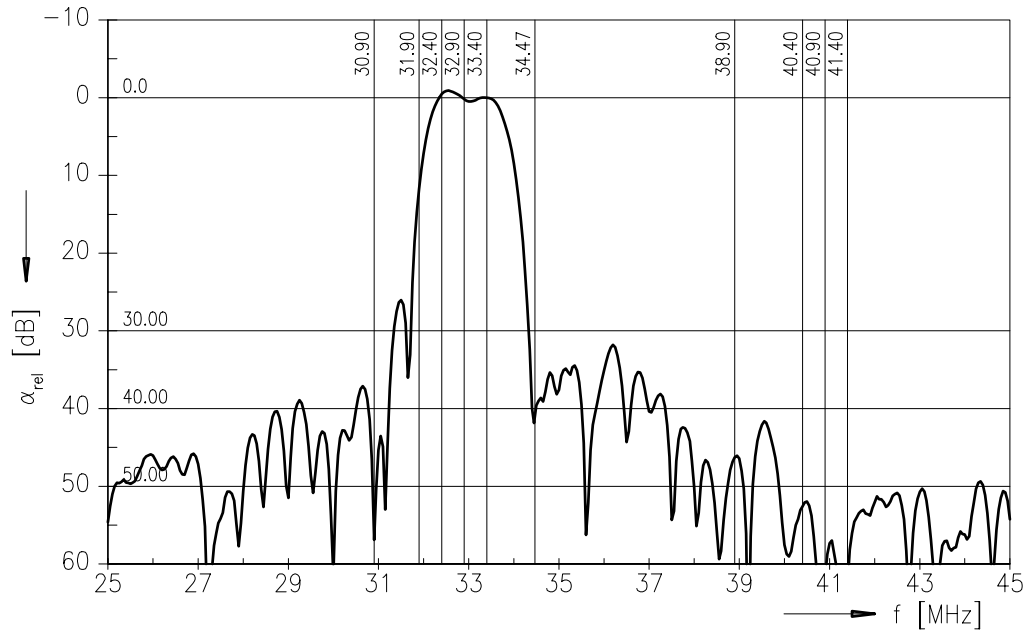
Reference temperature:  $T_A = 25\text{ °C}$   
 Terminating source impedance:  $Z_S = 50\ \Omega$   
 Terminating load impedance:  $Z_L = 2\text{ k}\Omega \parallel 3\text{ pF}$

|   |                                       | min. | typ.                 | max. |                           |
|---|---------------------------------------|------|----------------------|------|---------------------------|
| <b>Insertion attenuation</b>                |                                       |      |                      |      |                           |
|   | $\alpha$                              |      |                      |      |                           |
| Reference level for the following data      | 33,40 MHz                             | 9,1  | 10,6                 | 12,1 | dB                        |
| <b>Relative attenuation</b>                 |                                       |      |                      |      |                           |
|   | $\alpha_{rel}$                        |      |                      |      |                           |
| Sound carrier                               | 32,40 MHz                             | -1,4 | -0,4                 | 0,6  | dB                        |
|   | 32,90 MHz                             | -0,9 | 0,1                  | 1,1  | dB                        |
|   | 33,05 MHz                             | -0,5 | 0,5                  | 1,5  | dB                        |
| Picture carrier                             | 38,90 MHz                             | 40,0 | 47,0                 | —    | dB                        |
| Color carrier                               | 34,47 MHz                             | 33,0 | 40,0                 | —    | dB                        |
| Adjacent picture carrier                    | 30,90 MHz                             | 40,0 | 55,0                 | —    | dB                        |
|   | 31,90 MHz                             | 9,5  | 12,0                 | —    | dB                        |
| Adjacent sound carrier                      | 40,40 MHz                             | 46,0 | 54,0                 | —    | dB                        |
|   | 40,90 MHz                             | 46,0 | 61,0                 | —    | dB                        |
|   | 41,40 MHz                             | 46,0 | 60,0                 | —    | dB                        |
| Lower sidelobe                              | 25,00 ... 30,90 MHz                   | 34,0 | 38,0                 | —    | dB                        |
| Upper sidelobe                              | 38,90 ... 75,00 MHz                   | 35,0 | 41,0                 | —    | dB                        |
| <b>Impedance at 33,40 MHz</b>               |                                       |      |                      |      |                           |
| Input:                                      | $Z_{IN} = R_{IN} \parallel C_{IN}$    | —    | 0,7 $\parallel$ 11,6 | —    | k $\Omega$ $\parallel$ pF |
| Output:                                     | $Z_{OUT} = R_{OUT} \parallel C_{OUT}$ | —    | 2,3 $\parallel$ 2,6  | —    | k $\Omega$ $\parallel$ pF |
| <b>Temperature coefficient of frequency</b> | $TC_f$                                | —    | -72                  | —    | ppm/K                     |



Data Sheet

Frequency response





**SAW Components**

**K 9356 M**

**IF Filter for Audio Applications**

**38,90 MHz**

**Data Sheet**

**Published by EPCOS AG**

**Surface Acoustic Wave Components Division, SAW CE MM PD**

**P.O. Box 80 17 09, D-81617 München**

© EPCOS AG 2001. All Rights Reserved.

As far as patents or other rights of third parties are concerned, liability is only assumed for components per se, not for applications, processes and circuits implemented within components or assemblies.

The information describes the type of component and shall not be considered as assured characteristics.

Terms of delivery and rights to change design reserved.

For questions on technology, prices and delivery please contact the sales offices of EPCOS AG or the international representatives.

Due to technical requirements components may contain dangerous substances. For information on the type in question please also contact one of our sales offices.

# Mouser Electronics

Authorized Distributor

Click to View Pricing, Inventory, Delivery & Lifecycle Information:

[EPCOS:](#)

[B39389K9356M100](#)