

RF Connectors > SMA Connectors

KLS1-SMA-KYWE Panel Mount SMA Connector

Electrical Specifications:

Impedance: 50 Ω

Voltage Rating : 335 volts rms.

Dielectric Withstanding Voltage : 500 volts rms.

Contact Resistance Center contact: 2.0 mΩ

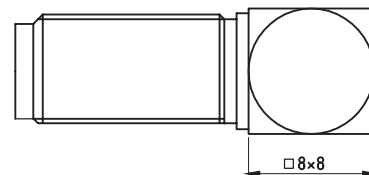
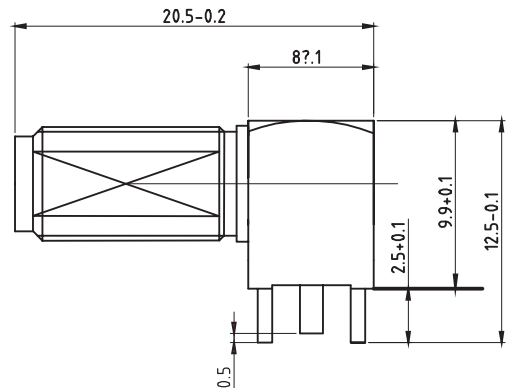
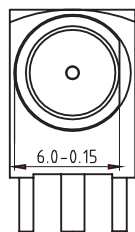
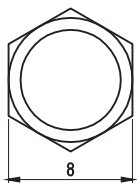
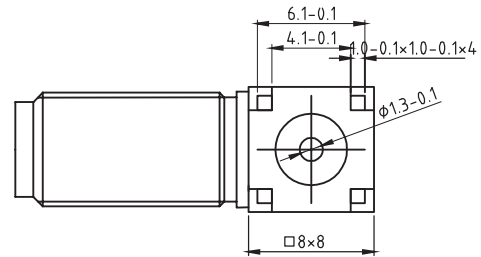
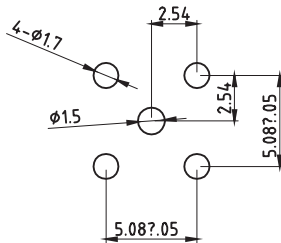
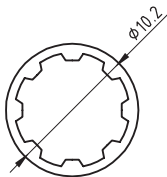
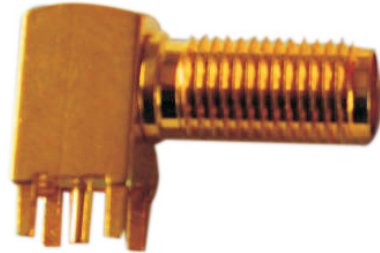
Insulation Resistance: 5,000 MΩ

Temperature Range: - 55°C to +155°C

Material:

Connector body: Brass per QQ-B-626

Center contact : Brass,gold Plating



ORDER INFORMATION

Product NO.: L-KLS1-SMA-KYWE-8-20

