

# MC74AC573, MC74ACT573

## Octal Buffer/Line Driver with 3-State Outputs

The MC74AC573/74ACT573 is a high-speed octal latch with buffered common Latch Enable (LE) and buffered common Output Enable ( $\overline{OE}$ ) inputs.

The MC74AC573/74ACT573 is functionally identical to the MC74AC373/74ACT373 but has inputs and outputs on opposite sides.

### Features

- Inputs and Outputs on Opposite Sides of Package Allowing Easy Interface with Microprocessors
- Useful as Input or Output Port for Microprocessors
- Functionally Identical to MC74AC373/74ACT373
- 3-State Outputs for Bus Interfacing
- Outputs Source/Sink 24 mA
- 'ACT573 Has TTL Compatible Inputs
- Pb-Free Packages are Available\*

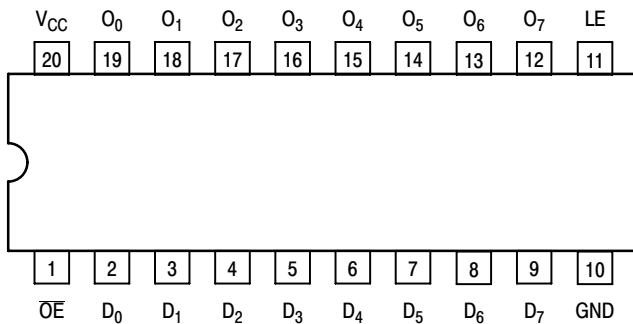


Figure 1. Pinout 20-Lead Packages Conductors (Top View)

### PIN ASSIGNMENT

| PIN                            | FUNCTION                    |
|--------------------------------|-----------------------------|
| D <sub>0</sub> -D <sub>7</sub> | Data Inputs                 |
| LE                             | Latch Enable Input          |
| $\overline{OE}$                | 3-State Output Enable Input |
| O <sub>0</sub> -O <sub>7</sub> | 3-State Latch Outputs       |

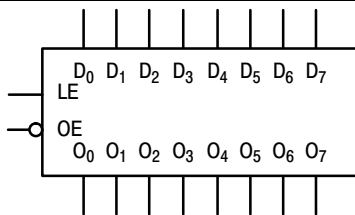


Figure 2. Logic Symbol

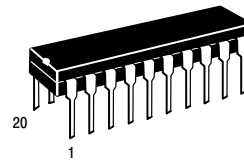
\*For additional information on our Pb-Free strategy and soldering details, please download the ON Semiconductor Soldering and Mounting Techniques Reference Manual, SOLDERRM/D.



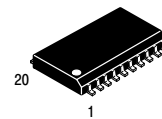
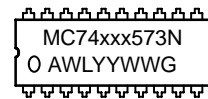
ON Semiconductor®

<http://onsemi.com>

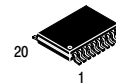
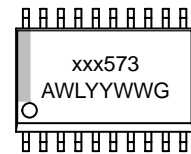
### MARKING DIAGRAM



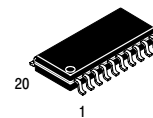
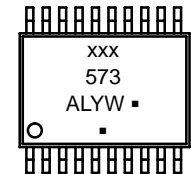
PDIP-20  
N SUFFIX  
CASE 738



SO-20  
DW SUFFIX  
CASE 751D



TSSOP-20  
DT SUFFIX  
CASE 948E



EIAJ-20  
M SUFFIX  
CASE 967



- xxx = AC or ACT
  - A = Assembly Location
  - WL, L = Wafer Lot
  - YY, Y = Year
  - WW, W = Work Week
  - G or ■ = Pb-Free Package
- (Note: Microdot may be in either location)

### ORDERING INFORMATION

See detailed ordering and shipping information in the package dimensions section on page 8 of this data sheet.

# MC74AC573, MC74ACT573

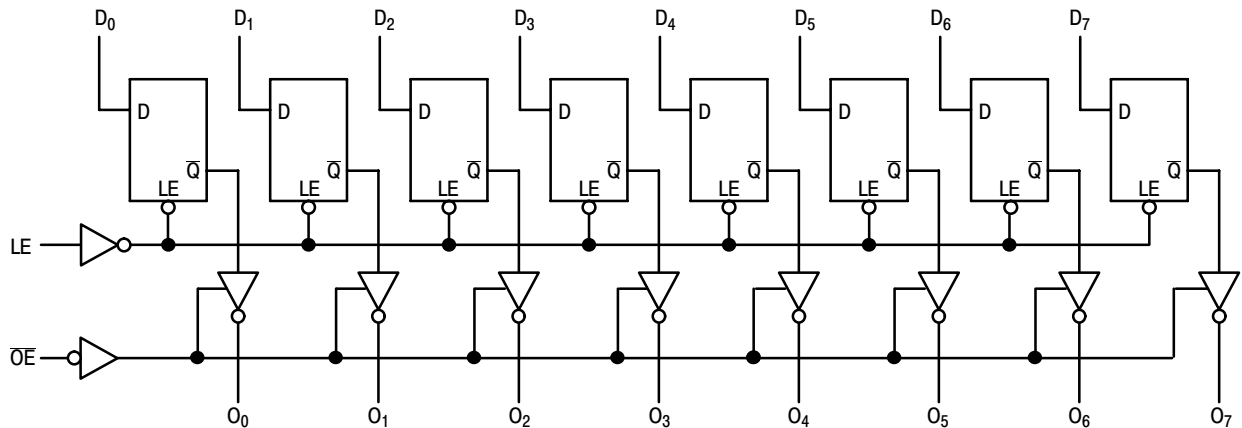
## TRUTH TABLE

| Inputs |    |                | Outputs        |
|--------|----|----------------|----------------|
| OE     | LE | D <sub>n</sub> | O <sub>n</sub> |
| L      | H  | H              | H              |
| L      | H  | L              | L              |
| L      | L  | X              | O <sub>0</sub> |
| H      | X  | X              | Z              |

H = HIGH Voltage Level  
 L = LOW Voltage Level  
 Z = High Impedance  
 X = Immaterial  
 O<sub>0</sub> = Previous O<sub>0</sub> before LOW-to-HIGH Transition of Clock

## Functional Description

The MC74AC573/74ACT574 contains eight D-type latches with 3-state output buffers. When the Latch Enable (LE) input is HIGH, data on the D<sub>n</sub> inputs enters the latches. In this condition the latches are transparent, i.e., a latch output will change state each time its D input changes. When LE is LOW the latches store the information that was present on the D inputs a setup time preceding the HIGH-to-LOW transition of LE. The 3-state buffers are controlled by the Output Enable ( $\overline{OE}$ ) input. When  $\overline{OE}$  is LOW, the buffers are enabled. When  $\overline{OE}$  is HIGH the buffers are in the high impedance mode but this does not interfere with entering new data into the latches.



NOTE: That this diagram is provided only for the understanding of logic operations and should not be used to estimate propagation delays.

Figure 3. Logic Diagram

# MC74AC573, MC74ACT573

## MAXIMUM RATINGS

| Symbol    | Parameter                                 | Value                  | Unit               |
|-----------|---|------------------------|--------------------|
| $V_{CC}$  | DC Supply Voltage (Referenced to GND)     | -0.5 to +7.0           | V                  |
| $V_{IN}$  | DC Input Voltage (Referenced to GND)      | -0.5 to $V_{CC} + 0.5$ | V                  |
| $V_{OUT}$ | DC Output Voltage (Referenced to GND)     | -0.5 to $V_{CC} + 0.5$ | V                  |
| $I_{IN}$  | DC Input Current, per Pin                 | $\pm 20$               | mA                 |
| $I_{OUT}$ | DC Output Sink/Source Current, per Pin    | $\pm 50$               | mA                 |
| $I_{CC}$  | DC $V_{CC}$ or GND Current per Output Pin | $\pm 50$               | mA                 |
| $T_{stg}$ | Storage Temperature                       | -65 to +150            | $^{\circ}\text{C}$ |

Maximum ratings are those values beyond which device damage can occur. Maximum ratings applied to the device are individual stress limit values (not normal operating conditions) and are not valid simultaneously. If these limits are exceeded, device functional operation is not implied, damage may occur and reliability may be affected.

## RECOMMENDED OPERATING CONDITIONS

| Symbol            | Parameter   | Min                     | Typ | Max      | Unit               |      |
|-------------------|---|-------------------------|-----|----------|--------------------|------|
| $V_{CC}$          | Supply Voltage  | 'AC                     | 2.0 | 5.0      | 6.0                | V    |
|                   |   | 'ACT                    | 4.5 | 5.0      | 5.5                |      |
| $V_{IN}, V_{OUT}$ | DC Input Voltage, Output Voltage (Ref. to GND)                          | 0                       | -   | $V_{CC}$ | V                  |      |
| $t_r, t_f$        | Input Rise and Fall Time (Note 1)<br>'AC Devices except Schmitt Inputs  | $V_{CC} @ 3.0\text{ V}$ | -   | 150      | -                  | ns/V |
|                   |   | $V_{CC} @ 4.5\text{ V}$ | -   | 40       | -                  |      |
|                   |   | $V_{CC} @ 5.5\text{ V}$ | -   | 25       | -                  |      |
| $t_r, t_f$        | Input Rise and Fall Time (Note 2)<br>'ACT Devices except Schmitt Inputs | $V_{CC} @ 4.5\text{ V}$ | -   | 10       | -                  | ns/V |
|                   |   | $V_{CC} @ 5.5\text{ V}$ | -   | 8.0      | -                  |      |
| $T_J$             | Junction Temperature (PDIP)   | -                       | -   | 140      | $^{\circ}\text{C}$ |      |
| $T_A$             | Operating Ambient Temperature Range                                     | -40                     | 25  | 85       | $^{\circ}\text{C}$ |      |
| $I_{OH}$          | Output Current – High   | -                       | -   | -24      | mA                 |      |
| $I_{OL}$          | Output Current – Low  | -                       | -   | 24       | mA                 |      |

- $V_{IN}$  from 30% to 70%  $V_{CC}$ ; see individual Data Sheets for devices that differ from the typical input rise and fall times.
- $V_{IN}$  from 0.8 V to 2.0 V; see individual Data Sheets for devices that differ from the typical input rise and fall times.

# MC74AC573, MC74ACT573

## DC CHARACTERISTICS

| Symbol           | Parameter                            | V <sub>CC</sub><br>(V) | 74AC                   |                   | 74AC                                  | Unit | Conditions  |
|------------------|--------------------------------------|------------------------|------------------------|-------------------|---------------------------------------|------|---|
|                  |                                      |                        | T <sub>A</sub> = +25°C |                   | T <sub>A</sub> =<br>-40°C to<br>+85°C |      |   |
|                  |                                      |                        | Typ                    | Guaranteed Limits |                                       |      |   |
| V <sub>IH</sub>  | Minimum High Level<br>Input Voltage  | 3.0                    | 1.5                    | 2.1               | 2.1                                   | V    | V <sub>OUT</sub> = 0.1 V<br>or V <sub>CC</sub> - 0.1 V  |
|                  |                                      | 4.5                    | 2.25                   | 3.15              | 3.15                                  |      |   |
|                  |                                      | 5.5                    | 2.75                   | 3.85              | 3.85                                  |      |   |
| V <sub>IL</sub>  | Maximum Low Level<br>Input Voltage   | 3.0                    | 1.5                    | 0.9               | 0.9                                   | V    | V <sub>OUT</sub> = 0.1 V<br>or V <sub>CC</sub> - 0.1 V  |
|                  |                                      | 4.5                    | 2.25                   | 1.35              | 1.35                                  |      |   |
|                  |                                      | 5.5                    | 2.75                   | 1.65              | 1.65                                  |      |   |
| V <sub>OH</sub>  | Minimum High Level<br>Output Voltage | 3.0                    | 2.99                   | 2.9               | 2.9                                   | V    | I <sub>OUT</sub> = -50 μA   |
|                  |                                      | 4.5                    | 4.49                   | 4.4               | 4.4                                   |      |   |
|                  |                                      | 5.5                    | 5.49                   | 5.4               | 5.4                                   |      |   |
|                  |                                      | 3.0                    | -                      | 2.56              | 2.46                                  | V    | *V <sub>IN</sub> = V <sub>IL</sub> or V <sub>IH</sub><br>-12 mA<br>I <sub>OH</sub> -24 mA<br>-24 mA   |
|                  |                                      | 4.5                    | -                      | 3.86              | 3.76                                  |      |   |
|                  |                                      | 5.5                    | -                      | 4.86              | 4.76                                  |      |   |
| V <sub>OL</sub>  | Maximum Low Level<br>Output Voltage  | 3.0                    | 0.002                  | 0.1               | 0.1                                   | V    | I <sub>OUT</sub> = 50 μA  |
|                  |                                      | 4.5                    | 0.001                  | 0.1               | 0.1                                   |      |   |
|                  |                                      | 5.5                    | 0.001                  | 0.1               | 0.1                                   |      |   |
|                  |                                      | 3.0                    | -                      | 0.36              | 0.44                                  | V    | *V <sub>IN</sub> = V <sub>IL</sub> or V <sub>IH</sub><br>12 mA<br>I <sub>OL</sub> 24 mA<br>24 mA  |
|                  |                                      | 4.5                    | -                      | 0.36              | 0.44                                  |      |   |
|                  |                                      | 5.5                    | -                      | 0.36              | 0.44                                  |      |   |
| I <sub>IN</sub>  | Maximum Input<br>Leakage Current     | 5.5                    | -                      | ±0.1              | ±1.0                                  | μA   | V <sub>I</sub> = V <sub>CC</sub> , GND  |
| I <sub>OZ</sub>  | Maximum<br>3-State<br>Current        | 5.5                    | -                      | ±0.5              | ±5.0                                  | μA   | V <sub>I</sub> (OE) = V <sub>IL</sub> , V <sub>IH</sub><br>V <sub>I</sub> = V <sub>CC</sub> , GND<br>V <sub>O</sub> = V <sub>CC</sub> , GND |
| I <sub>OLD</sub> | †Minimum Dynamic<br>Output Current   | 5.5                    | -                      | -                 | 75                                    | mA   | V <sub>OLD</sub> = 1.65 V Max   |
| I <sub>OHD</sub> |                                      | 5.5                    | -                      | -                 | -75                                   | mA   | V <sub>OHD</sub> = 3.85 V Min   |
| I <sub>CC</sub>  | Maximum Quiescent<br>Supply Current  | 5.5                    | -                      | 8.0               | 80                                    | μA   | V <sub>IN</sub> = V <sub>CC</sub> or GND  |

NOTE: I<sub>IN</sub> and I<sub>CC</sub> @ 3.0 V are guaranteed to be less than or equal to the respective limit @ 5.5 V V<sub>CC</sub>.

\*All outputs loaded; thresholds on input associated with output under test.

†Maximum test duration 2.0 ms, one output loaded at a time.

# MC74AC573, MC74ACT573

## AC CHARACTERISTICS (For Figures and Waveforms – See Section 3)

| Symbol           | Parameter   | V <sub>CC</sub> *<br>(V) | 74AC   |     |      | 74AC   |      | Unit | Fig. No. |
|------------------|---|--------------------------|--|-----|------|--|------|------|----------|
|                  |   |                          | T <sub>A</sub> = +25°C<br>C <sub>L</sub> = 50 pF |     |      | T <sub>A</sub> = -40°C<br>to +85°C<br>C <sub>L</sub> = 50 pF |      |      |          |
|                  |   |                          | Min  | Typ | Max  | Min  | Max  |      |          |
| t <sub>PLH</sub> | Propagation Delay<br>D <sub>n</sub> to O <sub>n</sub> | 3.3                      | 2.5  | –   | 13.0 | 2.0  | 15.0 | ns   | 3–5      |
|                  |   | 5.0                      | 2.5  | –   | 10.0 | 2.0  | 11.5 |      |          |
| t <sub>PHL</sub> | Propagation Delay<br>D <sub>n</sub> to O <sub>n</sub> | 3.3                      | 2.5  | –   | 12.0 | 2.0  | 14.0 | ns   | 3–5      |
|                  |   | 5.0                      | 2.5  | –   | 9.5  | 2.0  | 11.0 |      |          |
| t <sub>PLH</sub> | Propagation Delay<br>LE to O <sub>n</sub>             | 3.3                      | 2.5  | –   | 13.0 | 2.0  | 15.0 | ns   | 3–6      |
|                  |   | 5.0                      | 2.5  | –   | 9.5  | 2.0  | 11.0 |      |          |
| t <sub>PHL</sub> | Propagation Delay<br>LE to O <sub>n</sub>             | 3.3                      | 2.5  | –   | 12.0 | 2.0  | 14.0 | ns   | 3–6      |
|                  |   | 5.0                      | 2.5  | –   | 8.5  | 2.0  | 10.0 |      |          |
| t <sub>PZH</sub> | Output Enable Time                                    | 3.3                      | 2.5  | –   | 11.0 | 2.0  | 12.0 | ns   | 3–7      |
|                  |   | 5.0                      | 2.5  | –   | 9.0  | 2.0  | 10.0 |      |          |
| t <sub>PZL</sub> | Output Enable Time                                    | 3.3                      | 2.5  | –   | 11.0 | 2.0  | 12.5 | ns   | 3–8      |
|                  |   | 5.0                      | 2.5  | –   | 8.5  | 2.0  | 9.5  |      |          |
| t <sub>PHZ</sub> | Output Disable Time                                   | 3.3                      | 2.5  | –   | 12.5 | 2.0  | 13.5 | ns   | 3–7      |
|                  |   | 5.0                      | 2.5  | –   | 11.0 | 2.0  | 12.0 |      |          |
| t <sub>PLZ</sub> | Output Disable Time                                   | 3.3                      | 2.5  | –   | 9.5  | 2.0  | 10.5 | ns   | 3–8      |
|                  |   | 5.0                      | 2.5  | –   | 8.0  | 2.0  | 9.0  |      |          |

\*Voltage Range 3.3 V is 3.3 V ±0.3 V.  
Voltage Range 5.0 V is 5.0 V ±0.5 V.

## AC OPERATING REQUIREMENTS

| Symbol         | Parameter                                       | V <sub>CC</sub> *<br>(V) | 74AC   |                    | 74AC   |    | Unit | Fig. No. |
|----------------|---|--------------------------|--|--------------------|--|----|------|----------|
|                |   |                          | T <sub>A</sub> = +25°C<br>C <sub>L</sub> = 50 pF |                    | T <sub>A</sub> = -40°C<br>to +85°C<br>C <sub>L</sub> = 50 pF |    |      |          |
|                |   |                          | Typ  | Guaranteed Minimum |  |    |      |          |
| t <sub>s</sub> | Setup Time, HIGH or LOW<br>D <sub>n</sub> to LE | 3.3                      | –  | 3.5                | 4.0  | ns | 3–9  |          |
|                |   | 5.0                      | –  | 3.0                | 3.5  |    |      |          |
| t <sub>h</sub> | Hold Time, HIGH or LOW<br>D <sub>n</sub> to LE  | 3.3                      | –  | 2.0                | 2.0  | ns | 3–9  |          |
|                |   | 5.0                      | –  | 2.0                | 2.0  |    |      |          |
| t <sub>w</sub> | LE Pulse Width, HIGH                            | 3.3                      | –  | 6.0                | 7.0  | ns | 3–6  |          |
|                |   | 5.0                      | –  | 4.0                | 5.0  |    |      |          |

\*Voltage Range 3.3 V is 3.3 V ±0.3 V.  
Voltage Range 5.0 V is 5.0 V ±0.5 V.

# MC74AC573, MC74ACT573

## DC CHARACTERISTICS

| Symbol            | Parameter                              | V <sub>CC</sub> (V) | 74ACT                  |                   | 74ACT                           |    | Unit  | Conditions |
|-------------------|--|---------------------|------------------------|-------------------|---------------------------------|----|---|------------|
|                   |  |                     | T <sub>A</sub> = +25°C |                   | T <sub>A</sub> = -40°C to +85°C |    |   |            |
|                   |  |                     | Typ                    | Guaranteed Limits |                                 |    |   |            |
| V <sub>IH</sub>   | Minimum High Level Input Voltage       | 4.5                 | 1.5                    | 2.0               | 2.0                             | V  | V <sub>OUT</sub> = 0.1 V or V <sub>CC</sub> - 0.1 V   |            |
|                   |  | 5.5                 | 1.5                    | 2.0               | 2.0                             |    |   |            |
| V <sub>IL</sub>   | Maximum Low Level Input Voltage        | 4.5                 | 1.5                    | 0.8               | 0.8                             | V  | V <sub>OUT</sub> = 0.1 V or V <sub>CC</sub> - 0.1 V   |            |
|                   |  | 5.5                 | 1.5                    | 0.8               | 0.8                             |    |   |            |
| V <sub>OH</sub>   | Minimum High Level Output Voltage      | 4.5                 | 4.49                   | 4.4               | 4.4                             | V  | I <sub>OUT</sub> = -50 μA   |            |
|                   |  | 5.5                 | 5.49                   | 5.4               | 5.4                             |    |   |            |
|                   |  | 4.5                 | -                      | 3.86              | 3.76                            | V  | *V <sub>IN</sub> = V <sub>IL</sub> or V <sub>IH</sub><br>I <sub>OH</sub> = -24 mA   |            |
|                   |  | 5.5                 | -                      | 4.86              | 4.76                            |    |   |            |
| V <sub>OL</sub>   | Maximum Low Level Output Voltage       | 4.5                 | 0.001                  | 0.1               | 0.1                             | V  | I <sub>OUT</sub> = 50 μA  |            |
|                   |  | 5.5                 | 0.001                  | 0.1               | 0.1                             |    |   |            |
|                   |  | 4.5                 | -                      | 0.36              | 0.44                            | V  | *V <sub>IN</sub> = V <sub>IL</sub> or V <sub>IH</sub><br>I <sub>OL</sub> = 24 mA  |            |
|                   |  | 5.5                 | -                      | 0.36              | 0.44                            |    |   |            |
| I <sub>IN</sub>   | Maximum Input Leakage Current          | 5.5                 | -                      | ±0.1              | ±1.0                            | μA | V <sub>I</sub> = V <sub>CC</sub> , GND  |            |
| ΔI <sub>CCT</sub> | Additional Max. I <sub>CC</sub> /Input | 5.5                 | 0.6                    | -                 | 1.5                             | mA | V <sub>I</sub> = V <sub>CC</sub> - 2.1 V  |            |
| I <sub>OZ</sub>   | Maximum 3-State Current                | 5.5                 | -                      | ±0.5              | ±5.0                            | μA | V <sub>I</sub> (OE) = V <sub>IL</sub> , V <sub>IH</sub><br>V <sub>I</sub> = V <sub>CC</sub> , GND<br>V <sub>O</sub> = V <sub>CC</sub> , GND |            |
| I <sub>OLD</sub>  | †Minimum Dynamic Output Current        | 5.5                 | -                      | -                 | 75                              | mA | V <sub>OLD</sub> = 1.65 V Max   |            |
| I <sub>OHD</sub>  |  | 5.5                 | -                      | -                 | -75                             | mA | V <sub>OHD</sub> = 3.85 V Min   |            |
| I <sub>CC</sub>   | Maximum Quiescent Supply Current       | 5.5                 | -                      | 8.0               | 80                              | μA | V <sub>IN</sub> = V <sub>CC</sub> or GND  |            |

\*All outputs loaded; thresholds on input associated with output under test.

†Maximum test duration 2.0 ms, one output loaded at a time.

## AC CHARACTERISTICS (For Figures and Waveforms – See Section 3)

| Symbol           | Parameter  | V <sub>CC</sub> * (V) | 74ACT  |     |      | 74ACT   |      | Unit | Fig. No. |
|------------------|--|-----------------------|--|-----|------|---|------|------|----------|
|                  |  |                       | T <sub>A</sub> = +25°C<br>C <sub>L</sub> = 50 pF |     |      | T <sub>A</sub> = -40°C to +85°C<br>C <sub>L</sub> = 50 pF |      |      |          |
|                  |  |                       | Min  | Typ | Max  | Min   | Max  |      |          |
| t <sub>PLH</sub> | Propagation Delay D <sub>n</sub> to O <sub>n</sub> | 5.0                   | 2.5  | -   | 10.5 | 2.0   | 12   | ns   | 3-5      |
| t <sub>PHL</sub> | Propagation Delay D <sub>n</sub> to O <sub>n</sub> | 5.0                   | 2.5  | -   | 10.5 | 2.0   | 12   | ns   | 3-5      |
| t <sub>PLH</sub> | Propagation Delay LE to O <sub>n</sub>             | 5.0                   | 3.0  | -   | 10.5 | 2.5   | 12   | ns   | 3-6      |
| t <sub>PHL</sub> | Propagation Delay LE to O <sub>n</sub>             | 5.0                   | 2.5  | -   | 9.5  | 2.0   | 10.5 | ns   | 3-6      |
| t <sub>PZH</sub> | Output Enable Time                                 | 5.0                   | 2.0  | -   | 10   | 1.5   | 11   | ns   | 3-7      |
| t <sub>PZL</sub> | Output Enable Time                                 | 5.0                   | 1.5  | -   | 9.5  | 1.5   | 10.5 | ns   | 3-8      |
| t <sub>PHZ</sub> | Output Disable Time                                | 5.0                   | 2.5  | -   | 11   | 1.5   | 12.5 | ns   | 3-7      |
| t <sub>PLZ</sub> | Output Disable Time                                | 5.0                   | 1.5  | -   | 8.5  | 1.0   | 9.5  | ns   | 3-8      |

\*Voltage Range 5.0 V is 5.0 V ±0.5 V.

# MC74AC573, MC74ACT573

## AC OPERATING REQUIREMENTS

| Symbol         | Parameter                                       | V <sub>CC</sub> *<br>(V) | 74ACT  |                    | 74ACT  |    | Unit | Fig. No. |
|----------------|---|--------------------------|--|--------------------|--|----|------|----------|
|                |   |                          | T <sub>A</sub> = +25°C<br>C <sub>L</sub> = 50 pF |                    | T <sub>A</sub> = -40°C<br>to +85°C<br>C <sub>L</sub> = 50 pF |    |      |          |
|                |   |                          | Typ  | Guaranteed Minimum |  |    |      |          |
| t <sub>s</sub> | Setup Time, HIGH or LOW<br>D <sub>n</sub> to LE | 5.0                      | -  | 3.0                | 3.5  | ns | 3-9  |          |
| t <sub>h</sub> | Hold Time, HIGH or LOW<br>D <sub>n</sub> to LE  | 5.0                      | -  | 0                  | 0  | ns | 3-9  |          |
| t <sub>w</sub> | LE Pulse Width, HIGH                            | 5.0                      | -  | 3.5                | 4.0  | ns | 3-6  |          |

\*Voltage Range 5.0 V is 5.0 V ±0.5 V.

## CAPACITANCE

| Symbol          | Parameter                     | Value<br>Typ | Unit | Test Conditions         |
|-----------------|-------------------------------|--------------|------|-------------------------|
| C <sub>IN</sub> | Input Capacitance             | 5.0          | pF   | V <sub>CC</sub> = 5.0 V |
| C <sub>PD</sub> | Power Dissipation Capacitance | 25           | pF   | V <sub>CC</sub> = 5.0 V |

# MC74AC573, MC74ACT573

## ORDERING INFORMATION

| Device          | Package                | Shipping†                |
|-----------------|------------------------|--------------------------|
| MC74AC573N      | PDIP-20                | 18 Units / Rail          |
| MC74AC573NG     | PDIP-20<br>(Pb-Free)   | 18 Units / Rail          |
| MC74AC573DW     | SOIC-20                | 38 Units / Rail          |
| MC74AC573DWG    | SOIC-20<br>(Pb-Free)   | 38 Units / Rail          |
| MC74AC573DWR2   | SOIC-20                | 1000 Units / Tape & Reel |
| MC74AC573DWR2G  | SOIC-20<br>(Pb-Free)   | 1000 Units / Tape & Reel |
| MC74AC573DTR2   | TSSOP-20*              | 2500 Units / Tape & Reel |
| MC74AC573DTR2G  | TSSOP-20*              | 2500 Units / Tape & Reel |
| MC74AC573MEL    | SOEIAJ-20              | 2000 Units / Tape & Reel |
| MC74AC573MELG   | SOEIAJ-20<br>(Pb-Free) | 2000 Units / Tape & Reel |
| MC74ACT573N     | PDIP-20                | 18 Units / Rail          |
| MC74ACT573NG    | PDIP-20<br>(Pb-Free)   | 18 Units / Rail          |
| MC74ACT573DW    | SOIC-20                | 38 Units / Rail          |
| MC74ACT573DWG   | SOIC-20<br>(Pb-Free)   | 38 Units / Rail          |
| MC74ACT573DWR2  | SOIC-20                | 1000 Units / Tape & Reel |
| MC74ACT573DWR2G | SOIC-20<br>(Pb-Free)   | 1000 Units / Tape & Reel |
| MC74ACT573DTR2  | TSSOP-20*              | 2500 Units / Tape & Reel |
| MC74ACT573DTR2G | TSSOP-20*              | 2500 Units / Tape & Reel |

†For information on tape and reel specifications, including part orientation and tape sizes, please refer to our Tape and Reel Packaging Specifications Brochure, BRD8011/D.

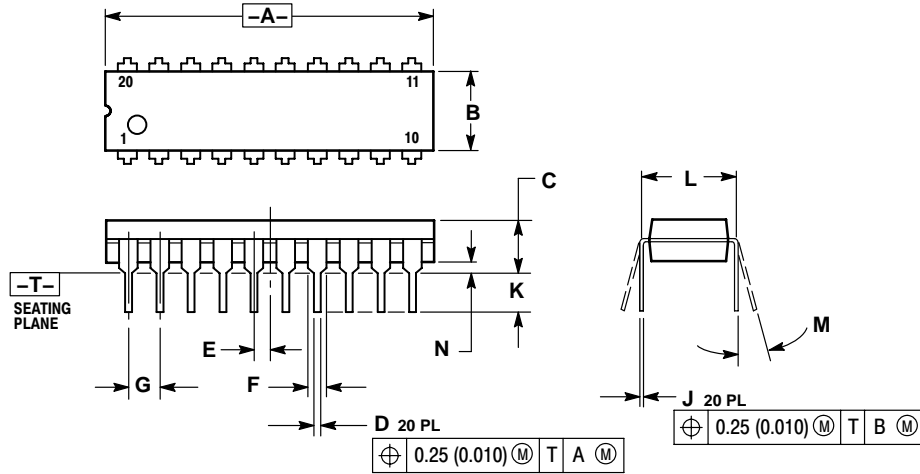
\*This package is inherently Pb-Free.



# MC74AC573, MC74ACT573

## PACKAGE DIMENSIONS

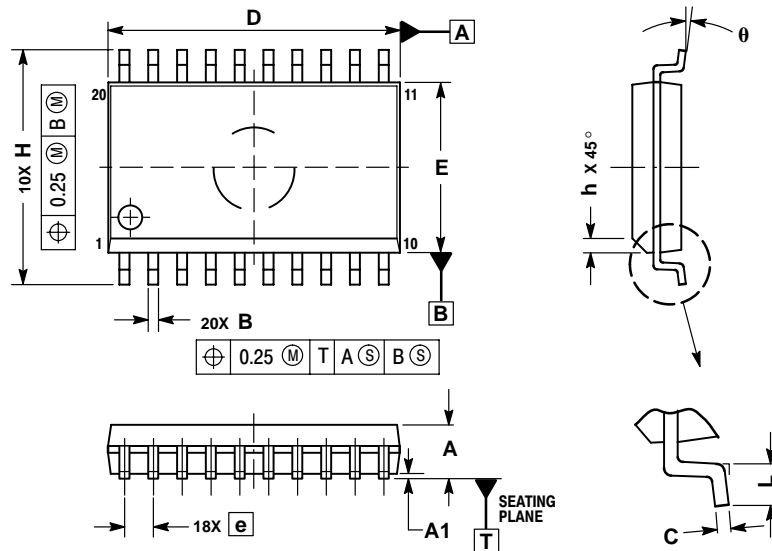
**PDIP-20**  
**N SUFFIX**  
 20 PIN PLASTIC DIP PACKAGE  
 CASE 738-03  
 ISSUE E



- NOTES:
1. DIMENSIONING AND TOLERANCING PER ANSI Y14.5M, 1982.
  2. CONTROLLING DIMENSION: INCH.
  3. DIMENSION L TO CENTER OF LEAD WHEN FORMED PARALLEL.
  4. DIMENSION B DOES NOT INCLUDE MOLD FLASH.

| DIM | INCHES    |       | MILLIMETERS |       |
|-----|-----------|-------|-------------|-------|
|     | MIN       | MAX   | MIN         | MAX   |
| A   | 1.010     | 1.070 | 25.66       | 27.17 |
| B   | 0.240     | 0.260 | 6.10        | 6.60  |
| C   | 0.150     | 0.180 | 3.81        | 4.57  |
| D   | 0.015     | 0.022 | 0.39        | 0.55  |
| E   | 0.050 BSC |       | 1.27 BSC    |       |
| F   | 0.050     | 0.070 | 1.27        | 1.77  |
| G   | 0.100 BSC |       | 2.54 BSC    |       |
| J   | 0.008     | 0.015 | 0.21        | 0.38  |
| K   | 0.110     | 0.140 | 2.80        | 3.55  |
| L   | 0.300 BSC |       | 7.62 BSC    |       |
| M   | 0°        | 15°   | 0°          | 15°   |
| N   | 0.020     | 0.040 | 0.51        | 1.01  |

**SO-20**  
**DW SUFFIX**  
 20 PIN PLASTIC SOIC PACKAGE  
 CASE 751D-05  
 ISSUE G



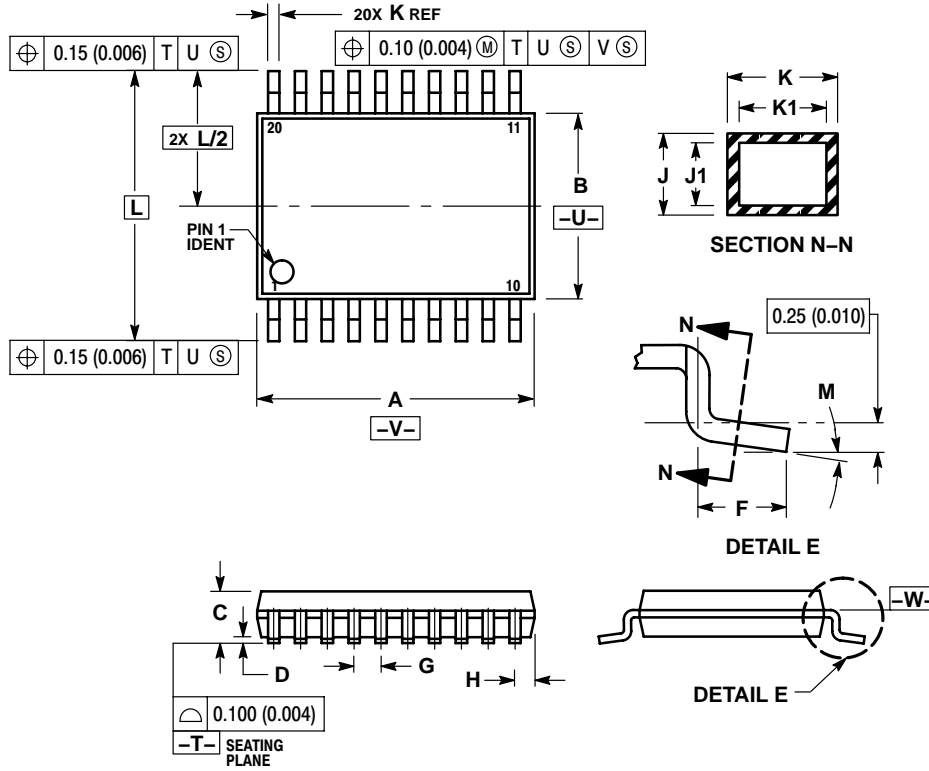
- NOTES:
1. DIMENSIONS ARE IN MILLIMETERS.
  2. INTERPRET DIMENSIONS AND TOLERANCES PER ASME Y14.5M, 1994.
  3. DIMENSIONS D AND E DO NOT INCLUDE MOLD PROTRUSION.
  4. MAXIMUM MOLD PROTRUSION 0.15 PER SIDE.
  5. DIMENSION B DOES NOT INCLUDE DAMBAR PROTRUSION. ALLOWABLE PROTRUSION SHALL BE 0.13 TOTAL IN EXCESS OF B DIMENSION AT MAXIMUM MATERIAL CONDITION.

| DIM   | MILLIMETERS |       |
|-------|-------------|-------|
|       | MIN         | MAX   |
| A     | 2.35        | 2.65  |
| A1    | 0.10        | 0.25  |
| B     | 0.35        | 0.49  |
| C     | 0.23        | 0.32  |
| D     | 12.65       | 12.95 |
| E     | 7.40        | 7.60  |
| e     | 1.27 BSC    |       |
| H     | 10.05       | 10.55 |
| h     | 0.25        | 0.75  |
| L     | 0.50        | 0.90  |
| theta | 0°          | 7°    |

# MC74AC573, MC74ACT573

## PACKAGE DIMENSIONS

**TSSOP-20**  
**DT SUFFIX**  
 20 PIN PLASTIC TSSOP PACKAGE  
 CASE 948E-02  
 ISSUE B



**NOTES:**

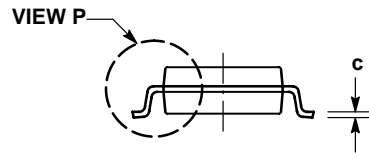
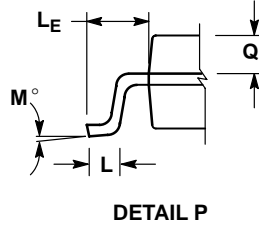
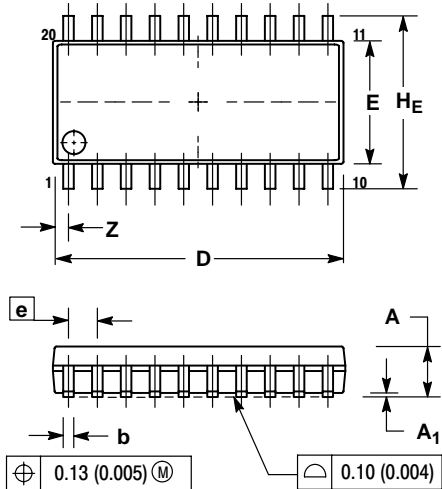
1. DIMENSIONING AND TOLERANCING PER ANSI Y14.5M, 1982.
2. CONTROLLING DIMENSION: MILLIMETER.
3. DIMENSION A DOES NOT INCLUDE MOLD FLASH, PROTRUSIONS OR GATE BURRS. MOLD FLASH OR GATE BURRS SHALL NOT EXCEED 0.15 (0.006) PER SIDE.
4. DIMENSION B DOES NOT INCLUDE INTERLEAD FLASH OR PROTRUSION. INTERLEAD FLASH OR PROTRUSION SHALL NOT EXCEED 0.25 (0.010) PER SIDE.
5. DIMENSION K DOES NOT INCLUDE DAMBAR PROTRUSION. ALLOWABLE DAMBAR PROTRUSION SHALL BE 0.08 (0.003) TOTAL IN EXCESS OF THE K DIMENSION AT MAXIMUM MATERIAL CONDITION.
6. TERMINAL NUMBERS ARE SHOWN FOR REFERENCE ONLY.
7. DIMENSION A AND B ARE TO BE DETERMINED AT DATUM PLANE -W-.

| DIM | MILLIMETERS |           | INCHES    |           |
|-----|-------------|-----------|-----------|-----------|
|     | MIN         | MAX       | MIN       | MAX       |
| A   | 6.40        | 6.60      | 0.252     | 0.260     |
| B   | 4.30        | 4.50      | 0.169     | 0.177     |
| C   | ---         | 1.20      | ---       | 0.047     |
| D   | 0.05        | 0.15      | 0.002     | 0.006     |
| F   | 0.50        | 0.75      | 0.020     | 0.030     |
| G   | 0.65 BSC    |           | 0.026 BSC |           |
| H   | 0.27        | 0.37      | 0.011     | 0.015     |
| J   | 0.09        | 0.20      | 0.004     | 0.008     |
| J1  | 0.09        | 0.16      | 0.004     | 0.006     |
| K   | 0.19        | 0.30      | 0.007     | 0.012     |
| K1  | 0.19        | 0.25      | 0.007     | 0.010     |
| L   | 6.40 BSC    |           | 0.252 BSC |           |
| M   | $0^\circ$   | $8^\circ$ | $0^\circ$ | $8^\circ$ |

# MC74AC573, MC74ACT573

## PACKAGE DIMENSIONS

**SOEIAJ-20**  
**M SUFFIX**  
 20 PIN PLASTIC EIAJ PACKAGE  
 CASE 967-01  
 ISSUE O



**NOTES:**

1. DIMENSIONING AND TOLERANCING PER ANSI Y14.5M, 1982.
2. CONTROLLING DIMENSION: MILLIMETER.
3. DIMENSIONS D AND E DO NOT INCLUDE MOLD FLASH OR PROTRUSIONS AND ARE MEASURED AT THE PARTING LINE. MOLD FLASH OR PROTRUSIONS SHALL NOT EXCEED 0.15 (0.006) PER SIDE.
4. TERMINAL NUMBERS ARE SHOWN FOR REFERENCE ONLY.
5. THE LEAD WIDTH DIMENSION (b) DOES NOT INCLUDE DAMBAR PROTRUSION. ALLOWABLE DAMBAR PROTRUSION SHALL BE 0.08 (0.003) TOTAL IN EXCESS OF THE LEAD WIDTH DIMENSION AT MAXIMUM MATERIAL CONDITION. DAMBAR CANNOT BE LOCATED ON THE LOWER RADIUS OR THE FOOT. MINIMUM SPACE BETWEEN PROTRUSIONS AND ADJACENT LEAD TO BE 0.46 (0.018).

| DIM            | MILLIMETERS |       | INCHES    |       |
|----------------|-------------|-------|-----------|-------|
|                | MIN         | MAX   | MIN       | MAX   |
| A              | ---         | 2.05  | ---       | 0.081 |
| A <sub>1</sub> | 0.05        | 0.20  | 0.002     | 0.008 |
| b              | 0.35        | 0.50  | 0.014     | 0.020 |
| c              | 0.18        | 0.27  | 0.007     | 0.011 |
| D              | 12.35       | 12.80 | 0.486     | 0.504 |
| E              | 5.10        | 5.45  | 0.201     | 0.215 |
| e              | 1.27 BSC    |       | 0.050 BSC |       |
| HE             | 7.40        | 8.20  | 0.291     | 0.323 |
| L              | 0.50        | 0.85  | 0.020     | 0.033 |
| LE             | 1.10        | 1.50  | 0.043     | 0.059 |
| M              | 0°          | 10°   | 0°        | 10°   |
| Q <sub>1</sub> | 0.70        | 0.90  | 0.028     | 0.035 |
| Z              | ---         | 0.81  | ---       | 0.032 |

# MC74AC573, MC74ACT573

**ON Semiconductor** and  are registered trademarks of Semiconductor Components Industries, LLC (SCILLC). SCILLC reserves the right to make changes without further notice to any products herein. SCILLC makes no warranty, representation or guarantee regarding the suitability of its products for any particular purpose, nor does SCILLC assume any liability arising out of the application or use of any product or circuit, and specifically disclaims any and all liability, including without limitation special, consequential or incidental damages. "Typical" parameters which may be provided in SCILLC data sheets and/or specifications can and do vary in different applications and actual performance may vary over time. All operating parameters, including "Typicals" must be validated for each customer application by customer's technical experts. SCILLC does not convey any license under its patent rights nor the rights of others. SCILLC products are not designed, intended, or authorized for use as components in systems intended for surgical implant into the body, or other applications intended to support or sustain life, or for any other application in which the failure of the SCILLC product could create a situation where personal injury or death may occur. Should Buyer purchase or use SCILLC products for any such unintended or unauthorized application, Buyer shall indemnify and hold SCILLC and its officers, employees, subsidiaries, affiliates, and distributors harmless against all claims, costs, damages, and expenses, and reasonable attorney fees arising out of, directly or indirectly, any claim of personal injury or death associated with such unintended or unauthorized use, even if such claim alleges that SCILLC was negligent regarding the design or manufacture of the part. SCILLC is an Equal Opportunity/Affirmative Action Employer. This literature is subject to all applicable copyright laws and is not for resale in any manner.

## PUBLICATION ORDERING INFORMATION

### LITERATURE FULFILLMENT:

Literature Distribution Center for ON Semiconductor  
P.O. Box 61312, Phoenix, Arizona 85082-1312 USA

**Phone:** 480-829-7710 or 800-344-3860 Toll Free USA/Canada

**Fax:** 480-829-7709 or 800-344-3867 Toll Free USA/Canada

**Email:** [orderlit@onsemi.com](mailto:orderlit@onsemi.com)

**N. American Technical Support:** 800-282-9855 Toll Free  
USA/Canada

**Japan:** ON Semiconductor, Japan Customer Focus Center  
2-9-1 Kamimeguro, Meguro-ku, Tokyo, Japan 153-0051  
**Phone:** 81-3-5773-3850

**ON Semiconductor Website:** <http://onsemi.com>

**Order Literature:** <http://www.onsemi.com/litorder>

For additional information, please contact your  
local Sales Representative.

**MC74AC573/D**

# Mouser Electronics

Authorized Distributor

Click to View Pricing, Inventory, Delivery & Lifecycle Information:

## ON Semiconductor:

[MC74AC573DTR2](#) [MC74AC573DW](#) [MC74AC573DWR2](#) [MC74AC573MEL](#) [MC74AC573N](#) [MC74AC573NG](#)  
[MC74ACT573DTR2](#) [MC74ACT573DW](#) [MC74ACT573DWR2](#) [MC74ACT573N](#) [MC74ACT573NG](#)