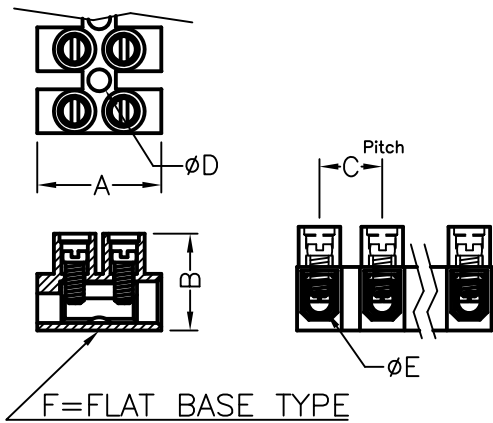
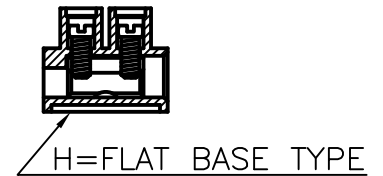


PART NO.	WIRE RANGE	AMP	VOLT	SCREW	POLES
PA7-H	1.5 mm ²	17.5	450V	M2.6X5	1~12
PA7-DSH					
PA7F-H					
PA7F-DSH					
PA9-H	2.5 mm ²	24.0	450V	M3.0X6	
PA9-DSH					
PA9F-H					
PA9F-DSH					
PA12H-H	6.0 mm ²	41.0	500V	M3.5X7	
PA12H-DS					
PA14H-H	10.0 mm ²	57.0	500V	M4.0X9	
PA14H-DS				M4.0X7	



NOTE:
H=FLAT BASE TYPE
DS=WIRE PROTECTORA
F=FLAT BASE TYPE



代號A, B, C, D, E請依目錄

NOTE:
H=FLAT BASE TYPE(底部加高)
DS=WIRE PROTECTORA(加彈片)
F=FLAT BASE TYPE(平底型)
已用NOTE與圖示共用, 不列入數字表格代號



PART NO.	A	B	C	D	E
PA7-H	17.0	14.5	8.2	2.9	2.8
PA7-DSH					
PA7F-H		13.5			
PA7F-DSH					
PA9-H	20.2	16.7	10.0	3.6	3.2
PA9-DSH					
PA9F-H		16.2			
PA9F-DSH					
PA12H-H	23.8	19.0	12.0	3.9	4.2
PA12H-DS			12.0	3.6	
PA14H-H	25.6	25.0	13.5	4.4	5.0
PA14H-DS					