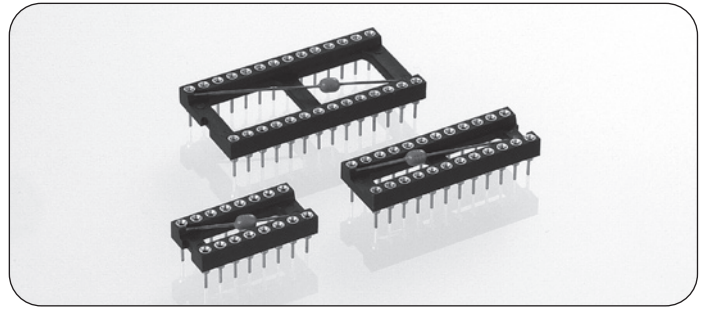


With ceramic multilayer decoupling capacitor 100 nF ± 20% / 50 V, epoxy encapsulated

**Technical Specs:**

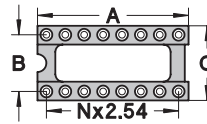
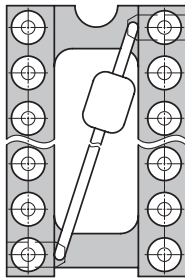
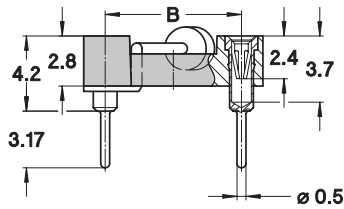
Insulator: Black glass filled polyester PBT-GF30-FR  
 Flammability: UL 94V-O  
 Sleeve: Brass CuZn36Pb3 (C36000)  
 Contact clip (4 finger): Beryllium copper (C17200)  
 Accepted pin Ø: 0.40 to 0.56 mm  
 Forces: (polished steel gauge Ø 0.43 mm)  
 – Insertion: 2 N typ.  
 – Withdrawal: 1 N typ.  
 Mechanical life: min 100 cycles  
 Rated current: 1 A  
 Contact resistance: max 10 mΩ  
 Dielectric strength: min 1000 V<sub>RMS</sub>  
 Temperature range: -25°C to +85°C



**Ordering information**

PP Plating code	Sleeve	Clip
93	Tin	Gold 0.75 µm

Other plating on request see page 146 for plating specs



No. of poles	A	B	C	See page 100	Order Codes
8	10.1	7.62	10.1	Fig. 4	110-PP-308-41-801001
14	17.7	7.62	10.1	Fig. 7	110-PP-314-41-801001
16	20.3	7.62	10.1	Fig. 8	110-PP-316-41-801001
18	22.8	7.62	10.1	Fig. 9	110-PP-318-41-801001
20	25.3	7.62	10.1	Fig. 10	110-PP-320-41-801001
22	27.8	7.62	10.1	Fig. 11	110-PP-322-41-801001
24	30.4	7.62	10.1	Fig. 12	110-PP-324-41-801001
22	27.8	10.16	12.6	Fig. 15	110-PP-422-41-801001
24	30.5	15.24	17.7	Fig. 20	110-PP-624-41-801001
28	35.5	15.24	17.7	Fig. 21	110-PP-628-41-801001
32	40.6	15.24	17.7	Fig. 22	110-PP-632-41-801001
40	50.8	15.24	17.7	Fig. 24	110-PP-640-41-801001

